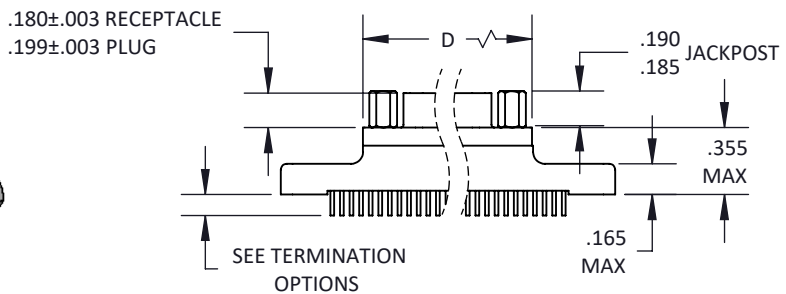
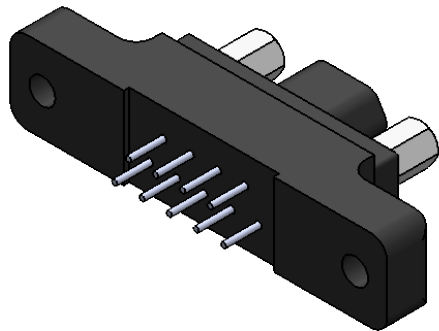
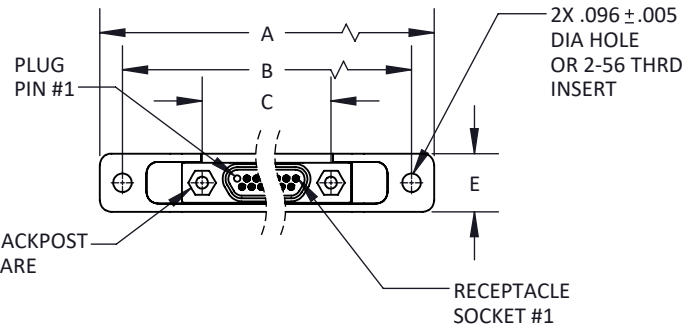
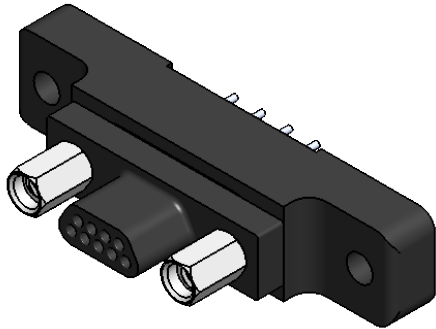


NO. OF CONTACTS	A MAX	B ±.007	C BSC	D MAX	E MAX
9	1.390	1.150	.565	.788	.308
15	1.390	1.150	.715	.938	.308
21	1.690	1.450	.865	1.088	.308
25	1.740	1.500	.965	1.188	.308
31	2.040	1.800	1.115	1.338	.308
37	2.340	2.100	1.265	1.488	.308
51	2.270	2.000	1.215	1.438	.351



TOLERANCE: .XXX ±.005
.XX ±.01
ANGLE ±1°

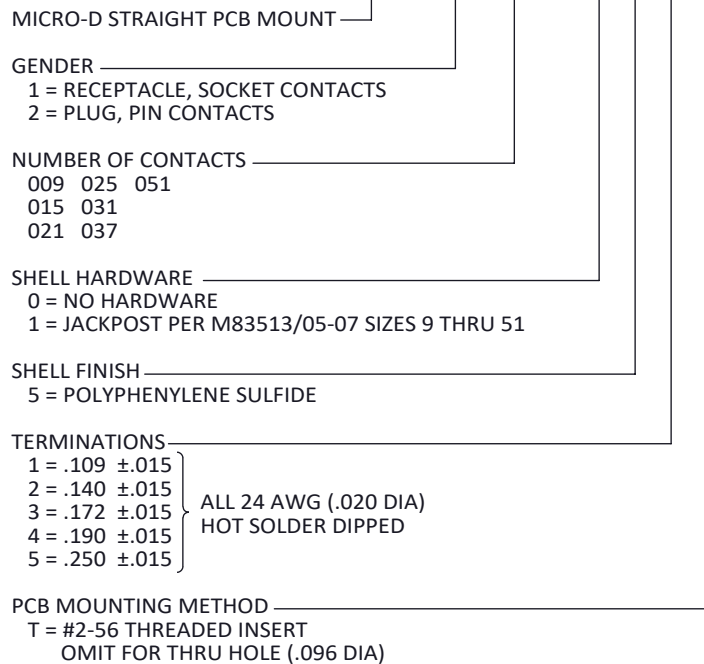
TITLE
**MICRO-D PLASTIC SHELL
STRAIGHT BOARD MOUNT**

SHT 1 OF 4

DWG. NO.
PBS

REV
M

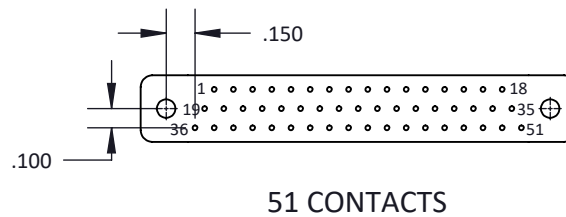
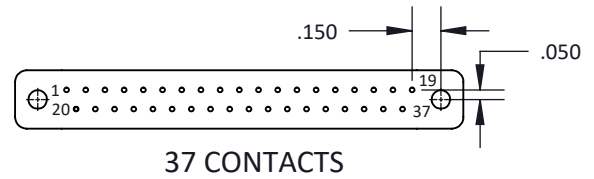
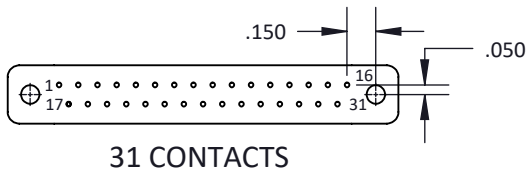
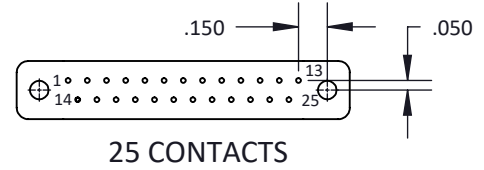
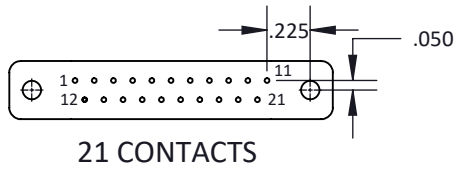
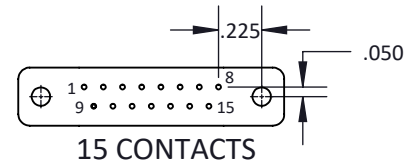
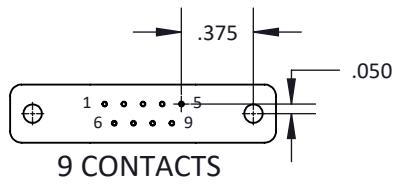
PBS-X XXX-X 5 X T



MATERIALS ARE IAW MIL-DTL-83513
FOR DETAILS SEE MIL SPEC OR WWW.CRISTEK.COM

- | | | |
|--|--|--|
| <p>1. MATERIALS:
SHELL/INSULATOR - POLYPHENYLENE SULFIDE PER MIL-M-24519 TYPE GST-40F
PIN/Socket CONTACT - COPPER ALLOY</p> <p>2. FINISH:
PIN/SOCKET CONTACT - GOLD PER MIL-G-45204, TYPE II, GRADE C, OVER OVER NICKEL PER QQ-N-290</p> | <p>3. SPECIFICATIONS:
CURRENT RATING ----- 3 AMPS MAX
TEMPERATURE RATING ----- -55° C TO +125° C
INSULATION RESISTANCE ----- 5000 MEGOHMS MIN
DWV AT SEA LEVEL ----- 600 VAC
DWV AT 70,000 FT ALTITUDE --- 150 VAC
CONTACT RESISTANCE ----- 24 AWG = 65 mV DROP MAX AT 2.5 AMPS.
CONTACT RETENTION ----- 5 lb MINIMUM AXIAL LOAD
ENGAGEMENT FORCE ----- 6 oz MAX
SEPARATION FORCE ----- 0.5 oz MIN</p> | <p>4. ADDITIONAL INFORMATION:
DESIGN AND PERFORMANCE IN GENERAL ACCORDANCE WITH M83513 WHERE APPLICABLE. CONTACT CRISTEK FOR OTHER CONFIGURATIONS.</p> |
|--|--|--|

TOLERANCE: .XXX ±.005 .XX ±.01 ANGLE ±1°	TITLE MICRO-D PLASTIC SHELL STRAIGHT BOARD MOUNT	SHT 2 OF 4	DWG. NO. PBS	REV M
--	--	------------	------------------------	-----------------



PLUG PCB LAYOUTS (OR BOTTOM VIEW OF RECEPTACLE)
.100 X .100 GRID PATTERN OFFSET .050

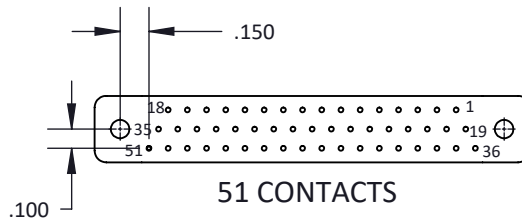
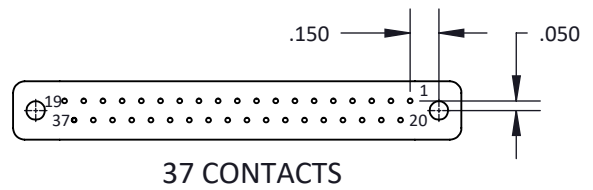
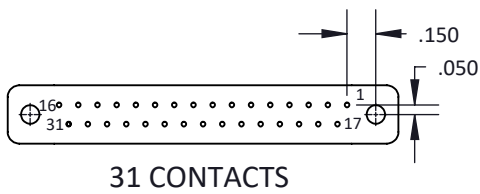
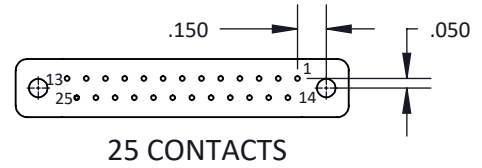
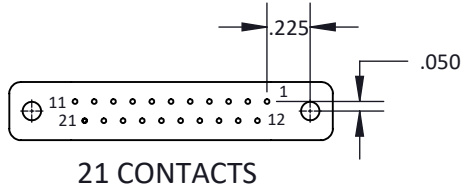
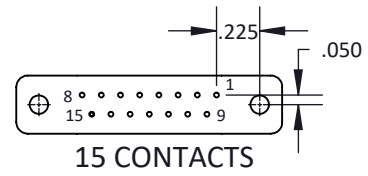
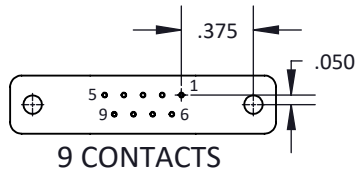
TOLERANCE: .XXX ±.005
.XX ±.01
ANGLE ±1°

TITLE
MICRO-D PLASTIC SHELL
STRAIGHT BOARD MOUNT

SHT 3 OF 4

DWG. NO.
PBS

REV
M



RECEPTACLE PCB LAYOUTS (OR BOTTOM VIEW OF PLUG)
.100 X .100 GRID PATTERN OFFSET .050

TOLERANCE: .XXX ±.005
.XX ±.01
ANGLE ±1°

TITLE
MICRO-D PLASTIC SHELL
STRAIGHT BOARD MOUNT

SHT 4 OF 4

DWG. NO.
PBS

REV
M