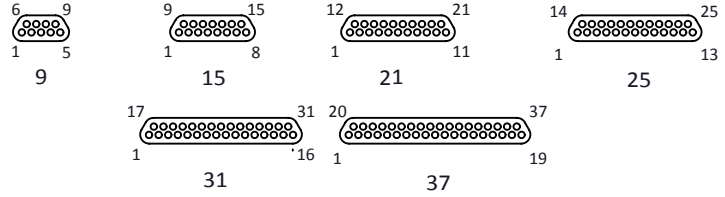
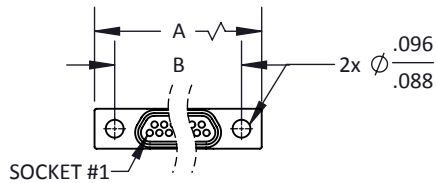
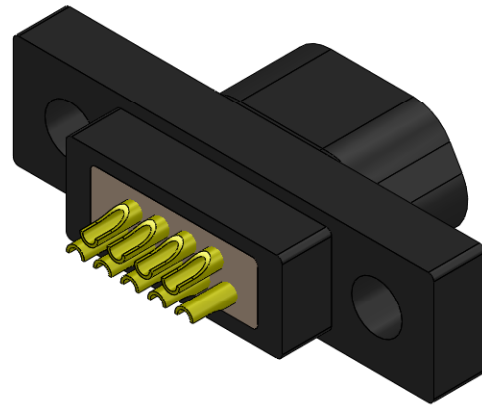


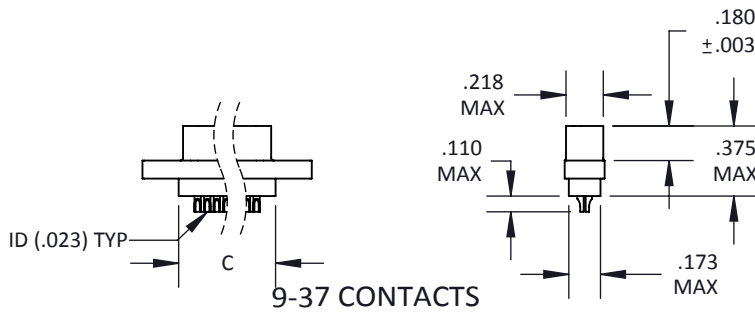
NO. OF CONTACTS	A MAX	B BSC	C MAX
9	.788	.565	.408
15	.938	.715	.558
21	1.088	.865	.708
25	1.188	.965	.808
31	1.338	1.115	.958
37	1.488	1.265	1.108
51	1.438	1.215	1.058



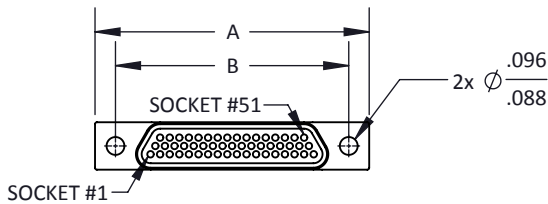
MATING FACE



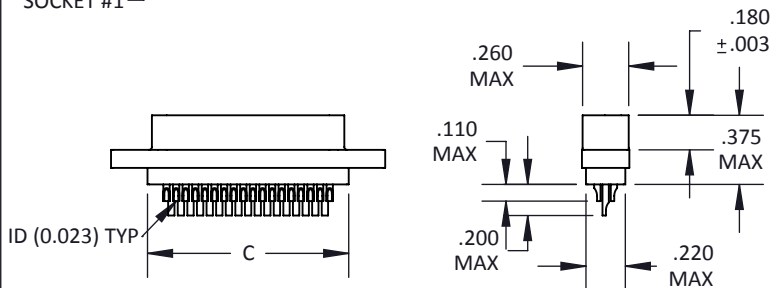
SOCKET #1



9-37 CONTACTS



SOCKET #1



51 CONTACTS

CIM 07 - X

CRISTEK'S P/N EQUIVALENT TO M83513 MIL SPEC.

RECEPTACLE, CLASS P,
SOLDER CUP SOCKET CONTACTS

NUMBER OF CONTACTS
A = 9 D = 25 G = 51
B = 15 E = 31
C = 21 F = 37

MATERIALS AND FINISHES ARE IAW MIL-DTL-83513 FOR DETAILS SEE MIL SPEC OR WWW.CRISTEK.COM

1. MATERIALS:
ONE PIECE SHELL/INSULATOR - GLASS FILLED THERMOPLASTIC
SOCKET CONTACT - COPPER ALLOY

2. FINISH:
CONTACT - GOLD OVER NICKEL

3. SPECIFICATIONS:
CURRENT RATING ----- 3 AMPS MAX
TEMPERATURE RATING ----- -55° C TO +125° C
INSULATION RESISTANCE ----- 5000 MEGOHMS MIN
DWV AT SEA LEVEL ----- 600 VAC
DWV AT 70,000 FT ALTITUDE --- 150 VAC
CONTACT RETENTION ----- 5 lb MINIMUM AXIAL LOAD
ENGAGEMENT FORCE ----- 6 oz MAX
SEPARATION FORCE ----- 0.5 oz MIN

4. ADDITIONAL INFORMATION:
FOR CROSS-REFERENCING CRISTEK PART NUMBERS TO M83513, SEE CROSS REFERENCE INFORMATION IN THE FRONT OF THIS SECTION.
FOR MOUNTING HARDWARE OPTIONS, SEE THE HARDWARE PAGES AT THE END OF THIS SECTION

TOLERANCE: .XXX ±.005
.XX ±.01
ANGLE ±1°

TITLE
MICROMINIATURE D PLASTIC SHELL
RECEPTACLE, SOLDER CUP

SHT 1 OF 1

DWG. NO.
M83513/07

REV
E