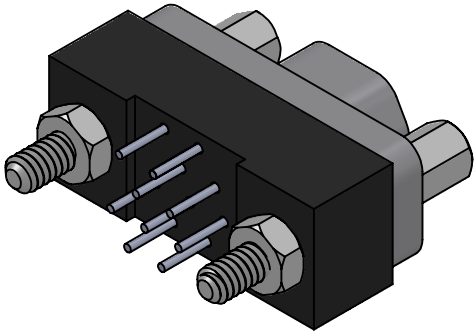
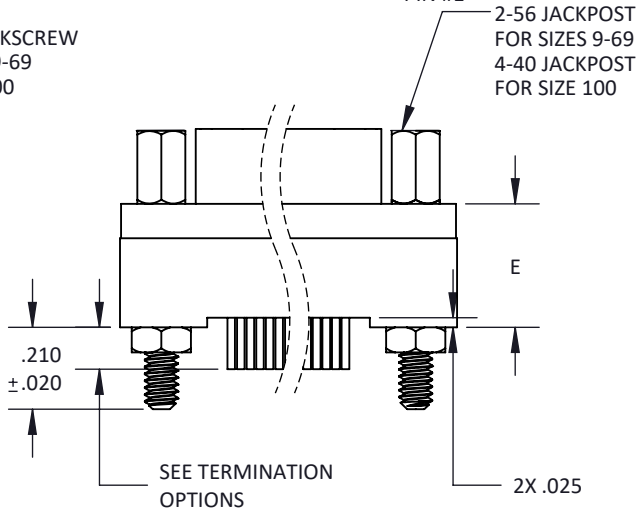
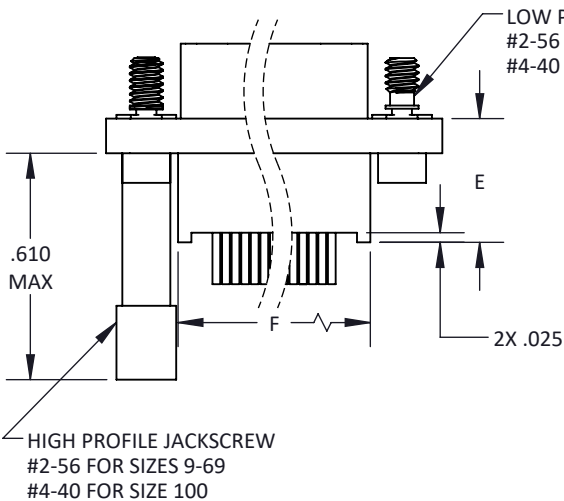
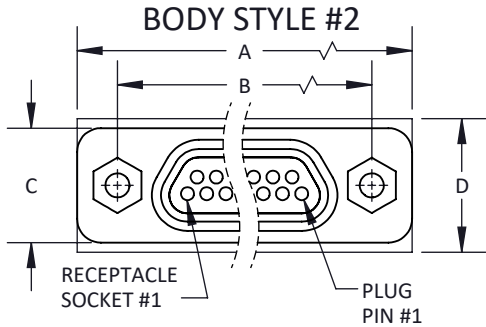
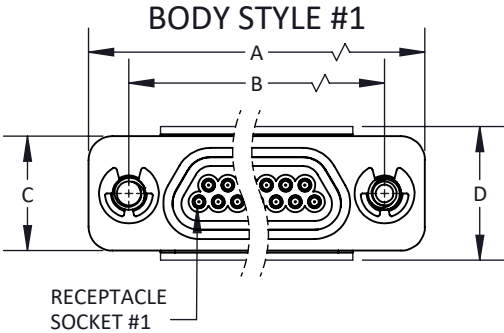
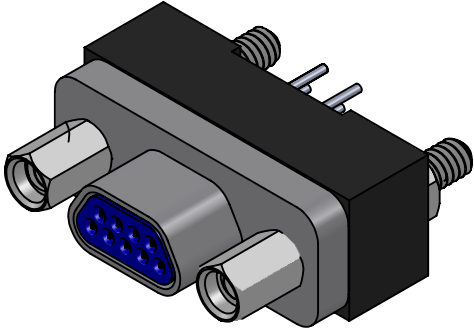
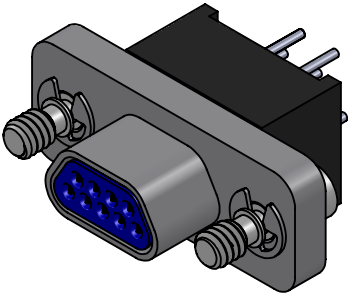


NO. OF CONTACTS	A MAX	B BSC	C MAX	D MAX	E MAX	F _{MAX} BODY STYLE #1 ONLY
9	.785	.565	.308	.310	.330	.400
15	.935	.715	.308	.310	.330	.550
21	1.085	.865	.308	.310	.330	.700
25	1.185	.965	.308	.310	.330	.800
31	1.335	1.115	.308	.310	.330	.950
37	1.485	1.265	.308	.310	.330	1.100
51	1.435	1.215	.351	.400	.345	1.045
69	1.735	1.515	.351	.400	.345	1.333
100	2.170	1.800	.394	.510	.400	1.550



BACK VIEW



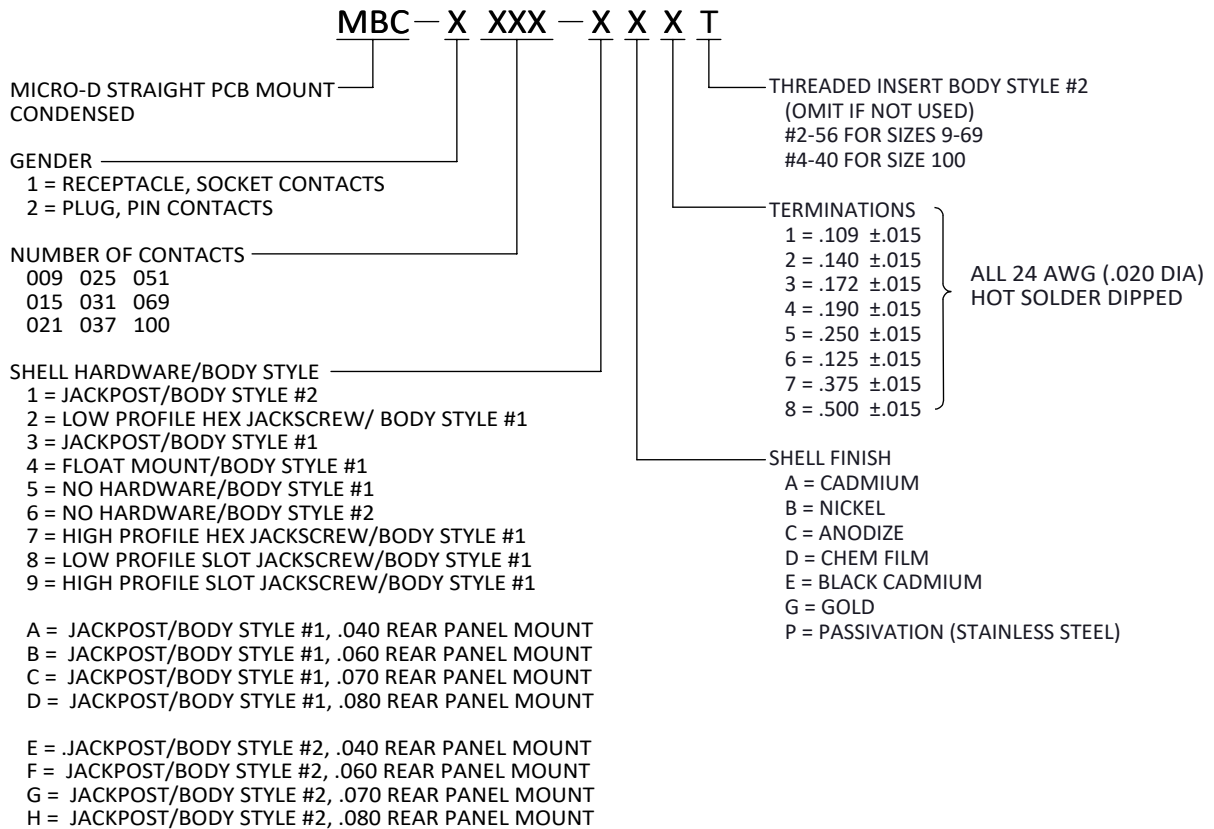
TOLERANCE: .XXX ±.005
.XX ±.01
ANGLE ±1°

TITLE
MICRO-D METAL SHELL
STRAIGHT BOARD MOUNT, CONDENSED

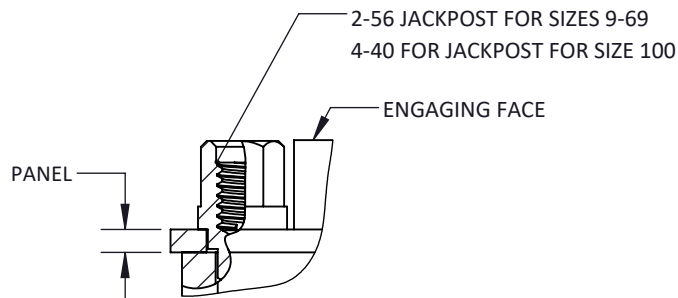
SHT 1 OF 4

DWG. NO.
MBC

REV
AA



**REAR PANEL MOUNT
BODY STYLE #1 SHOWN**



MATERIALS AND FINISHES ARE IAW MIL-DTL-83513
FOR DETAILS SEE MIL SPEC OR WWW.CRISTEK.COM

1. MATERIALS:

SHELL - ALUMINUM ALLOY OR STAINLESS STEEL
INSULATOR/BACKSHELL - GLASS FILLED THERMOPLASTIC
PIN/SOCKET CONTACT - COPPER ALLOY
INTERFACIAL SEAL - FLUOROSILICONE BLEND

2. FINISH:

SHELL - SEE OPTIONS ABOVE
PIN/SOCKET CONTACT - GOLD OVER NICKEL

3. SPECIFICATIONS:

CURRENT RATING ----- 3 AMPS MAX
TEMPERATURE RATING ----- -55° C TO +125° C
INSULATION RESISTANCE ----- 5000 MEGOHMS MIN
DWV AT SEA LEVEL ----- 600 VAC
DWV AT 70,000 FT ALTITUDE -- 150 VAC
CONTACT RESISTANCE ----- 65 mV DROP MAX AT 2.5 AMPS
CONTACT RETENTION ----- 5 lb MINIMUM AXIAL LOAD
ENGAGEMENT FORCE ----- 6 oz MAX
SEPARATION FORCE ----- 0.5 oz MIN

4. ADDITIONAL INFORMATION:

DESIGN AND PERFORMANCE IN GENERAL
ACCORDANCE WITH M83513 WHERE APPLICABLE.
CONTACT CRISTEK FOR RoHS AND OTHER
CONFIGURATIONS.

TOLERANCE: .XXX ±.005
.XX ±.01
ANGLE ±1°

TITLE
**MICRO-D METAL SHELL
STRAIGHT BOARD MOUNT, CONDENSED**

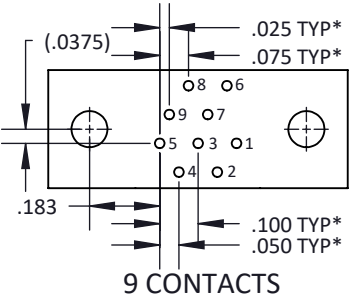
SHT 2 OF 4

DWG. NO.

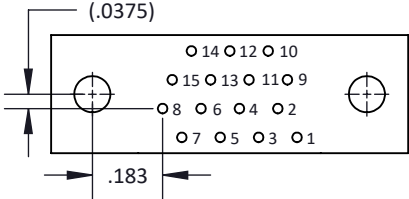
MBC

REV

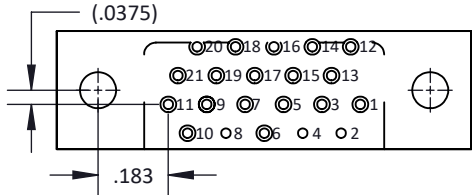
AA



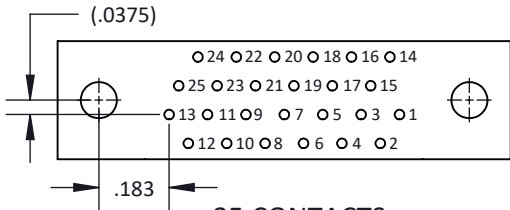
9 CONTACTS



15 CONTACTS



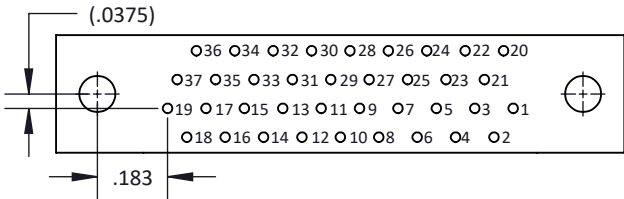
21 CONTACTS



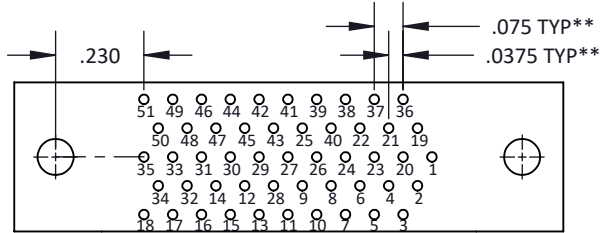
25 CONTACTS



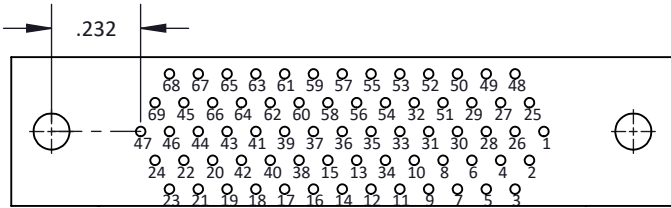
31 CONTACTS



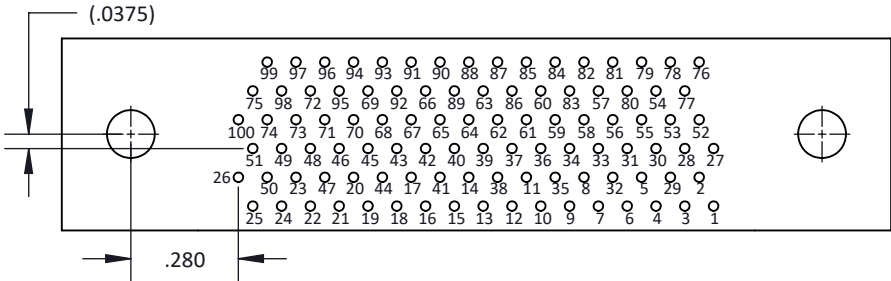
37 CONTACTS



51 CONTACTS



69 CONTACTS



100 CONTACTS

MBC PLUG PCB LAYOUTS

* SIZES 9-37: 0.100 X 0.075 GRID PATTERN OFFSET BY 0.050

** SIZES 51-100: 0.075 X 0.075 GRID PATTERN OFFSET BY 0.0375

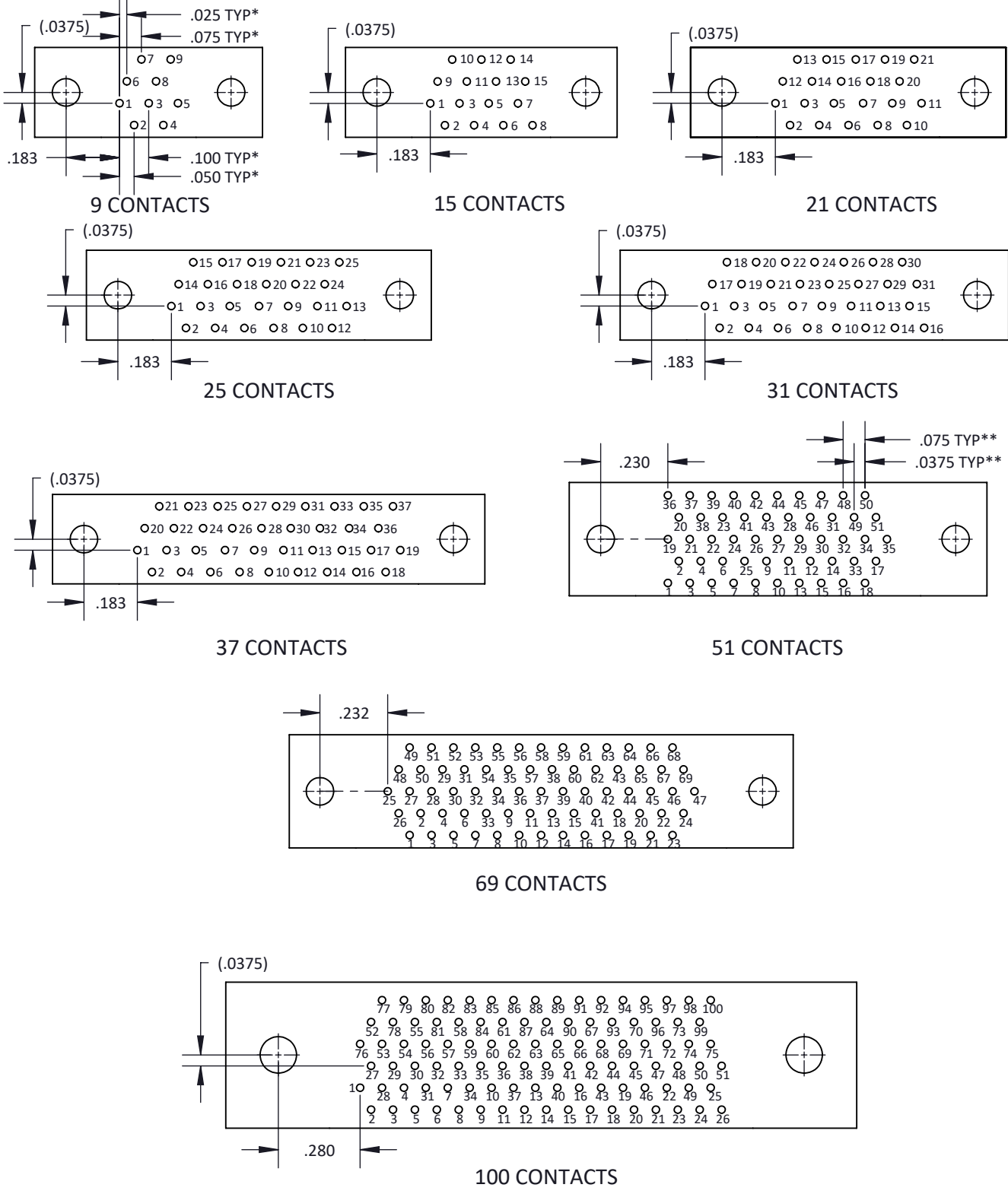
TOLERANCE: .XXX ±.005 .XX ±.01 ANGLE ±1°
--

TITLE MICRO-D METAL SHELL STRAIGHT BOARD MOUNT, CONDENSED

SHT 3 OF 4

DWG. NO. MBC

REV AA



MBC RECEPTACLE PCB LAYOUTS

* SIZES 9-37: 0.100 X 0.075 GRID PATTERN OFFSET BY 0.050

** SIZES 51-100: 0.075 X 0.075 GRID PATTERN OFFSET BY 0.0375

TOLERANCE: .XXX ±.005 .XX ±.01 ANGLE ±1°	TITLE MICRO-D METAL SHELL STRAIGHT BOARD MOUNT, CONDENSED	SHT 4 OF 4	DWG. NO. MBC	REV AA
--	---	------------	------------------------	------------------