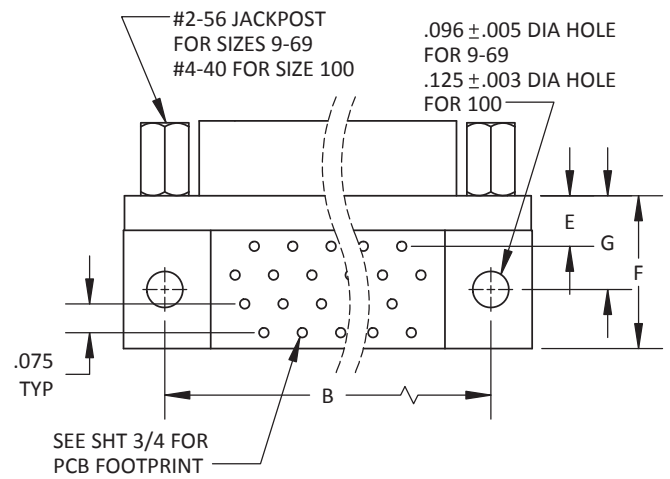
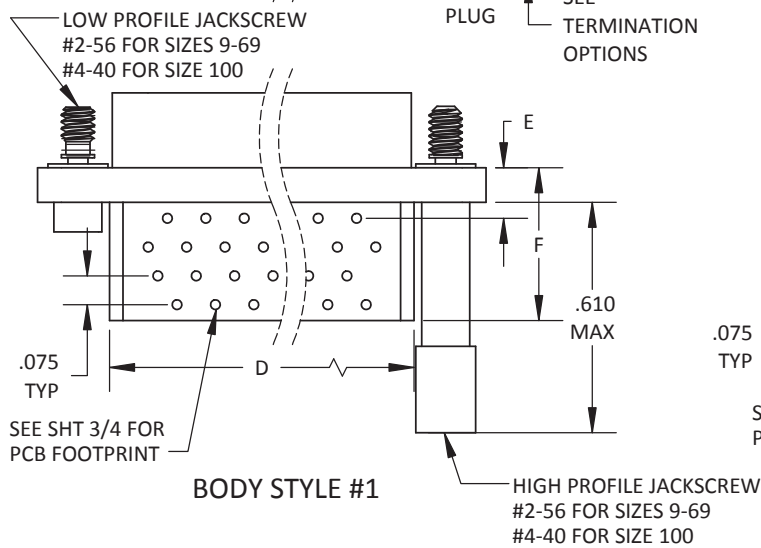
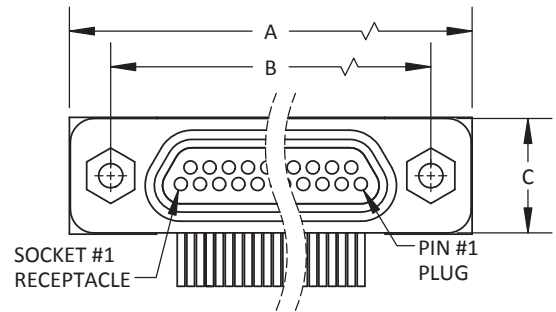
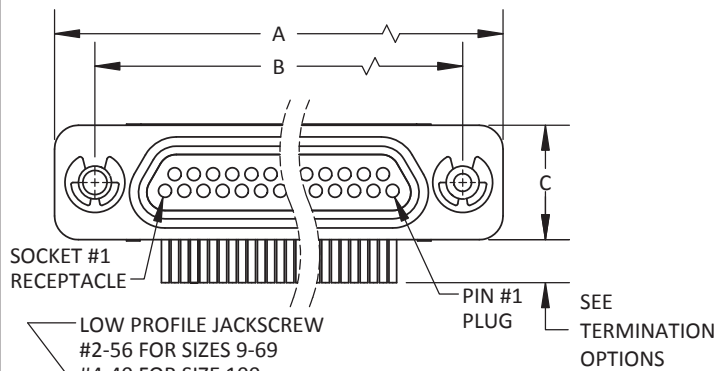
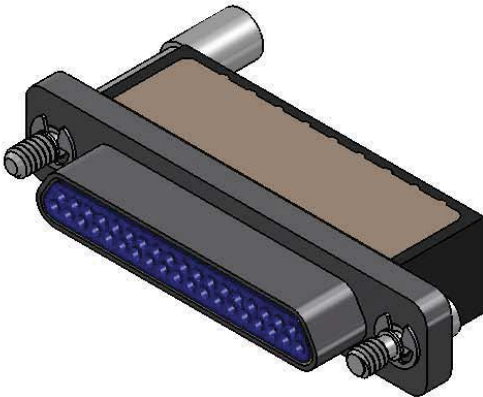
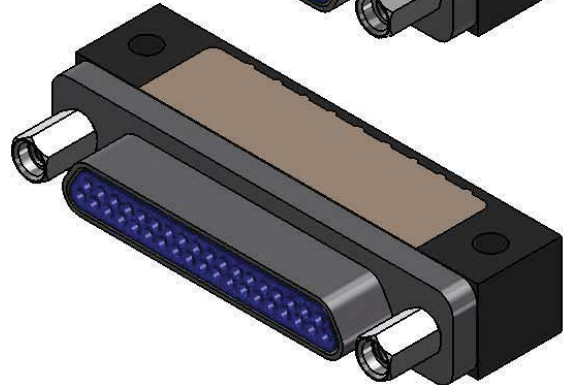
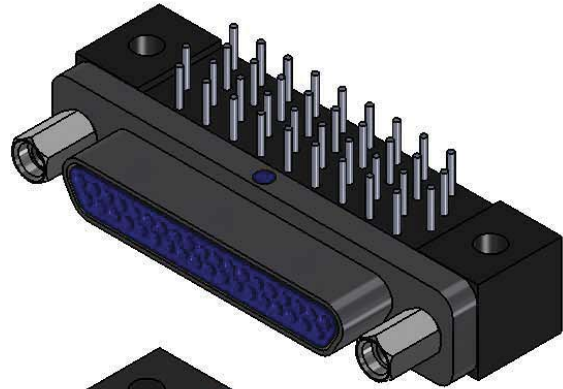


**MICRO-D METAL SHELL,
RIGHT ANGLE BOARD MOUNT, CONDENSED**

NO. OF CONTACTS	A MAX	B BSC	C MAX	D MAX BODY STYLE #1	E MAX	F MAX	G MAX
9	.785	.565	.308	.400	.138	.410	.250
15	.935	.715	.308	.550	.138	.410	.250
21	1.085	.865	.308	.700	.138	.410	.250
25	1.185	.965	.308	.800	.138	.410	.250
31	1.335	1.115	.308	.950	.138	.410	.250
37	1.485	1.265	.308	1.100	.138	.410	.250
51	1.435	1.215	.351	1.045	.145	.500	.295
69	1.735	1.515	.351	1.350	.145	.500	.295
100	2.170	1.800	.394	1.550	.163	.615	.350



TOLERANCE: .XXX ± .005
.XX ± .01
ANGLE ± 1°

TITLE
**MICRO-D METAL SHELL,
RIGHT ANGLE BOARD MOUNT,
CONDENSED**

SHT 1 OF 4

DWG. NO.

MCR

REV
P

MICRO-D METAL SHELL, RIGHT ANGLE BOARD MOUNT, CONDENSED

MCR - X XXX - X X X T

METAL MICRO-D RIGHT ANGLE BOARD MOUNT CONDENSED

GENDER
1 = RECEPTACLE, SOCKET CONTACTS
2 = PLUG, PIN CONTACTS

NUMBER OF CONTACTS
009 025 051
015 031 069
021 037 100

SHELL HARDWARE/BODY STYLE
1 = JACKPOST/BODY STYLE #2
2 = LOW PROFILE HEX JACKSCREW/BODY STYLE #1
3 = HIGH PROFILE HEX JACKSCREW/BODY STYLE #1
4 = THREADED INSERT/BODY STYLE #1
5 = NO HARDWARE/BODY STYLE #1
6 = NO HARDWARE/BODY STYLE #2
7 = JACKPOST/BODY STYLE #1
8 = LOW PROFILE SLOT JACKSCREW/BODY STYLE #1
9 = HIGH PROFILE SLOT JACKSCREW/BODY STYLE #1

SHELL FINISH
A = CADMIUM
B = NICKEL
C = ANODIZE
D = CHEM FILM
E = BLACK CADMIUM
G = GOLD
P = PASSIVATION (STAINLESS STEEL)

TERMINATIONS
1 = .109 ±.015
2 = .140 ±.015
3 = .172 ±.015
4 = .190 ±.015
5 = .250 ±.015
6 = .125 ±.015
7 = .375 ±.015
8 = .500 ±.015

ALL 24 AWG (.020 DIA)
HOT SOLDER DIPPED

THREADED INSERT (OMIT IF NOT USED)
#2-56 FOR SIZES 9-69
#4-40 FOR SIZE 100

MATERIALS AND FINISHES ARE IAW MIL-DTL-83513
FOR DETAILS SEE MIL SPEC OR WWW.CRISTEK.COM

1. MATERIALS:

SHELL - ALUMINUM ALLOY OR STAINLESS STEEL
INSULATOR/BACKSHELL - GLASS FILLED THERMOPLASTIC
PIN/SOCKET CONTACT - COPPER ALLOY
INTERFACIAL SEAL - FLUOROSILICONE BLEND

2. FINISH:

SHELL - SEE OPTIONS ABOVE
PIN/SOCKET CONTACT - GOLD OVER NICKEL

3. SPECIFICATIONS:

CURRENT RATING ----- 3 AMPS MAX
TEMPERATURE RATING ----- -55° C TO +125° C
INSULATION RESISTANCE ----- 5000 MEGOHMS MIN
DWV AT SEA LEVEL ----- 600 VAC
DWV AT 70,000 FT ALTITUDE -- 150 VAC
CONTACT RESISTANCE ----- 24 AWG = 25 MILLIOHMS MAX
CONTACT RETENTION ----- 5 lb MINIMUM AXIAL LOAD
ENGAGEMENT FORCE ----- 6 oz MAX
SEPARATION FORCE ----- 0.5 oz MIN

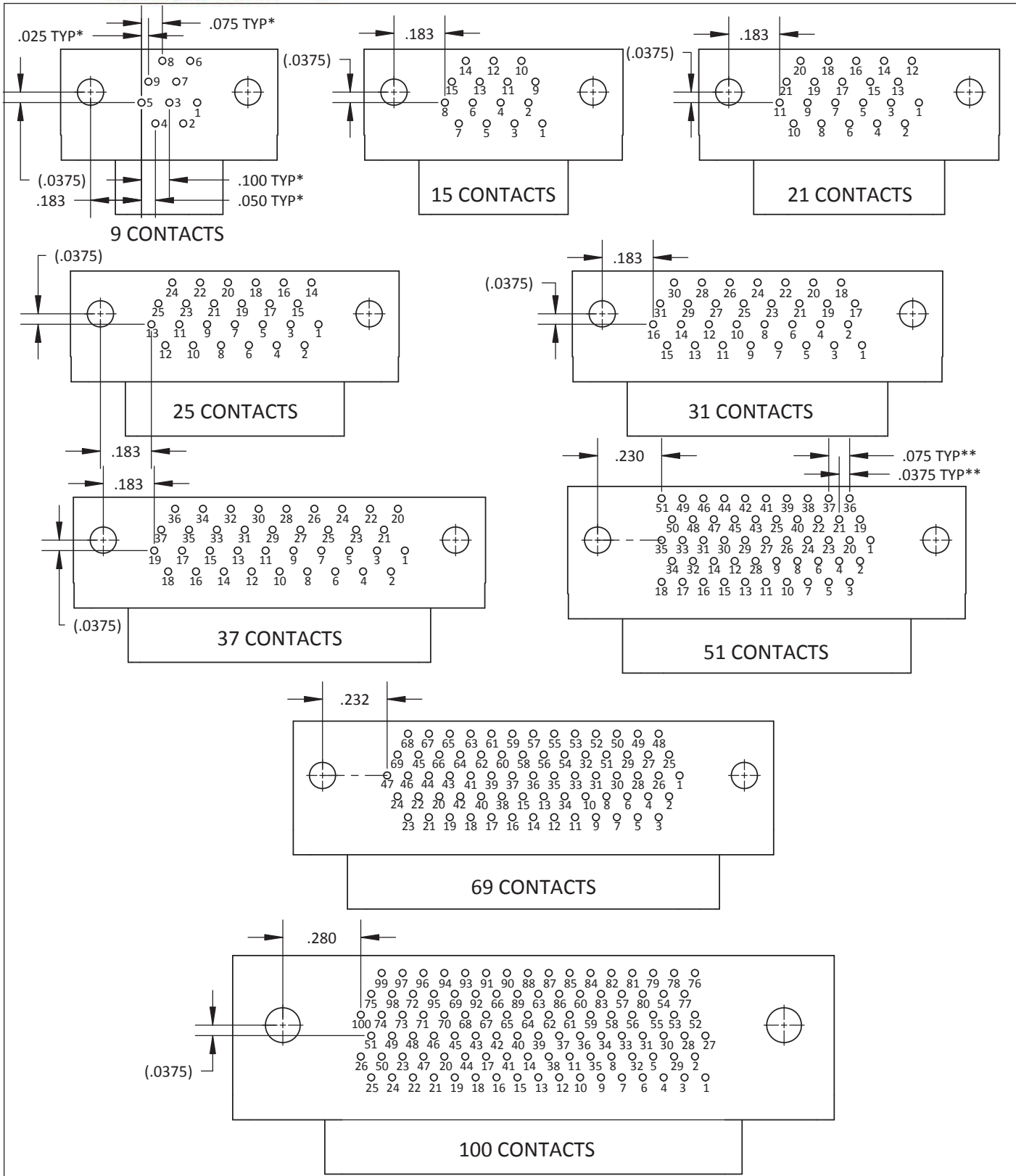
4. ADDITIONAL INFORMATION:

DESIGN AND PERFORMANCE IN GENERAL ACCORDANCE WITH M83513 WHERE APPLICABLE. CONTACT CRISTEK FOR RoHS AND OTHER CONFIGURATIONS.

TOLERANCE: .XXX ±.005 .XX ±.01 ANGLE ±1°	TITLE MICRO-D METAL SHELL, RIGHT ANGLE BOARD MOUNT, CONDENSED	SHT 2 OF 4	DWG. NO. MCR	REV P
--	--	------------	-----------------	----------



MICRO-D METAL SHELL, RIGHT ANGLE BOARD MOUNT, CONDENSED

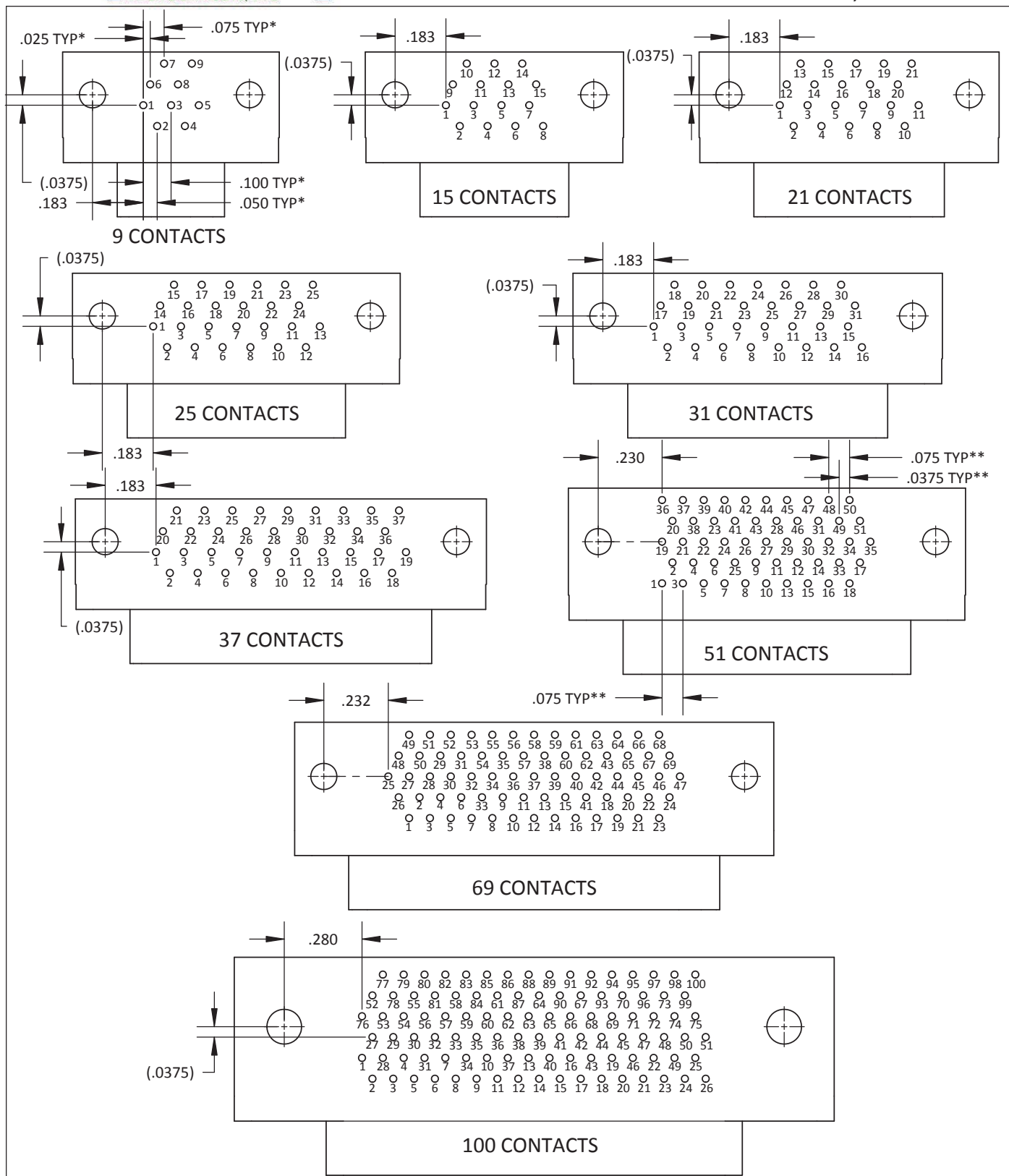


MCR PLUG PCB LAYOUTS

* SIZES 9-37: .100 X .075 GRID PATTERN OFFSET BY .050

** SIZES 51-100: .075 X .075 GRID PATTERN OFFSET BY .0375

TOLERANCE: .XXX ±.005 .XX ±.01 ANGLE ±1°	TITLE MICRO-D METAL SHELL, RIGHT ANGLE BOARD MOUNT, CONDENSED	SHT 3 OF 4	DWG. NO. MCR	REV P
--	--	------------	-----------------	----------



MCR RECEPTACLE PCB LAYOUTS

* SIZES 9-37: .100 X .075 GRID PATTERN OFFSET BY .050
 ** SIZES 51-100: .075 X .075 GRID PATTERN OFFSET BY .0375

TOLERANCE: .XXX ±.005 .XX ±.01 ANGLE ±1°	TITLE MICRO-D METAL SHELL, RIGHT ANGLE BOARD MOUNT, CONDENSED	SHIT 4 OF 4	DWG. NO. MCR	REV P
--	--	-------------	-----------------	----------