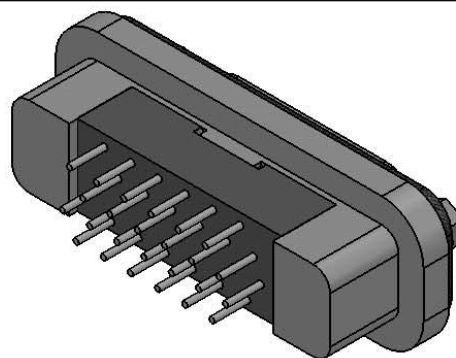
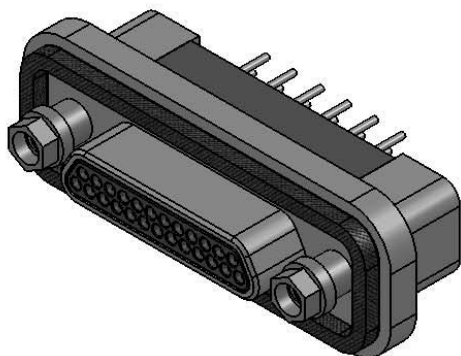


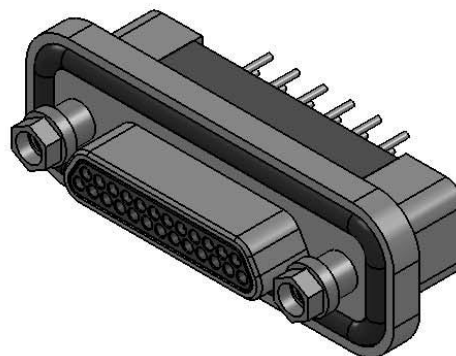
NO. OF CONTACTS	A ±.005	B BSC	C		D	E
			O-RING	SQUARE GASKET		
9	.957	.565	.480	.480	.773	.298
15	1.107	.715	.480	.480	.923	.298
21	1.257	.865	.480	.480	1.073	.298
25	1.357	.965	.480	.480	1.173	.298
31	1.507	1.115	.480	.480	1.323	.298
37	1.657	1.265	.480	.480	1.473	.298
51	1.657	1.215	.523	.561	1.477	.440
69	1.957	1.515	.523	.561	1.777	.440
100	2.383	1.800	.600	.638	2.219	.515



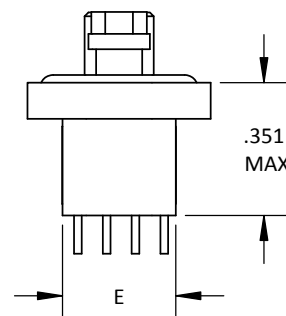
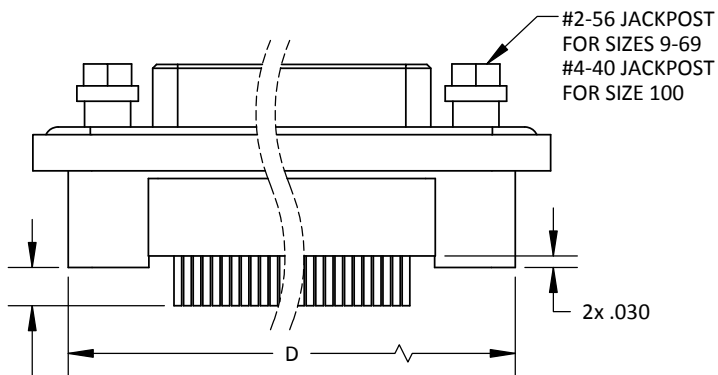
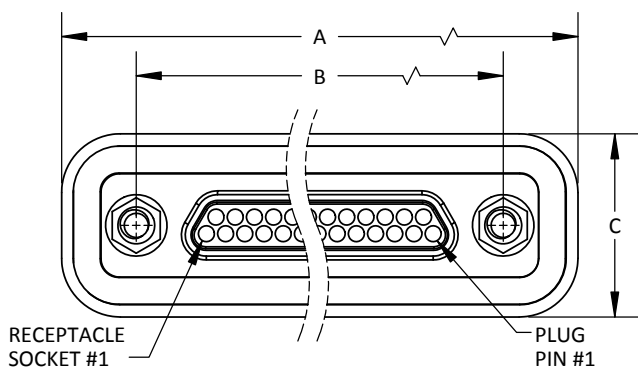
REAR VIEW



WITH GASKET



WITH O-RING



TOLERANCE: .XXX ±.005
.XX ±.01
ANGLE ±1°

TITLE
MICRO-D METAL SHELL
STRAIGHT BOARD MOUNT,
CONDENSED, W/ O-RING/GASKET

SHT 1 OF 4

DWG. NO.
MDV

REV
F



MICRO-D METAL SHELL, STRAIGHT BOARD MOUNT, CONDENSED, W/ O-RING/GASKET

MDV - X XXX - X X X - X

METAL MICRO-D STRAIGHT BOARD MOUNT CONDENSED W/ O-RING/GASKET

GENDER
1 = RECEPTACLE, SOCKET CONTACTS
2 = PLUG, PIN CONTACTS

NUMBER OF CONTACTS
009 025 051
015 031 069
021 037 100

SHELL HARDWARE
0 = NO HARDWARE
3 = JACKPOST (.040 PANEL MOUNT)
4 = JACKPOST (.060 PANEL MOUNT)
5 = JACKPOST (.070 PANEL MOUNT)
6 = JACKPOST (.080 PANEL MOUNT)

SHELL FINISH
A = CADMIUM
B = ELECTROLESS NICKEL

O-RING
C = O-RING CONDUCTIVE
D = O-RING DIELECTRIC
S = SQ GASKET CONDUCTIVE

TERMINATION
1 = .109 ±.015
2 = .140 ±.015
3 = .172 ±.015
4 = .190 ±.015
5 = .250 ±.015
6 = .125 ±.015

ALL 24 AWG HOT SOLDER DIPPED

MATERIALS AND FINISHES ARE IAW MIL-DTL-83513 FOR DETAILS SEE MIL SPEC OR WWW.CRISTEK.COM

1. MATERIALS:

SHELL - ALUMINUM ALLOY
INSULATOR/BACKSHELL - GLASS FILLED THERMOPLASTIC
PIN/SOCKET CONTACT - COPPER ALLOY
INTERFACIAL SEAL - FLUOROSILICONE BLEND

2. FINISH:

SHELL - ELECTROLESS NICKEL OR CADMIUM OVER ELECTROLESS NICKEL
PIN/SOCKET CONTACT - GOLD OVER NICKEL

3. SPECIFICATIONS:

CURRENT RATING ----- 3 AMPS MAX
TEMPERATURE RATING ----- -55° C TO +125° C
INSULATION RESISTANCE ----- 5000 MEGOHMS MIN
DWV AT SEA LEVEL ----- 600 VAC
DWV AT 70,000 FT ALTITUDE --- 150 VAC
CONTACT RESISTANCE ----- 24 AWG = 25 MILLIOHMS MAX
CONTACT RETENTION ----- 5 lb MINIMUM AXIAL LOAD
ENGAGEMENT FORCE ----- 6 oz MAX
SEPARATION FORCE ----- 0.5 oz MIN

4. ADDITIONAL INFORMATION:

DESIGN AND PERFORMANCE IN GENERAL ACCORDANCE WITH M83513 WHERE APPLICABLE. CONTACT CRISTEK FOR OTHER CONFIGURATIONS.

TOLERANCE: .XXX ±.005
.XX ±.01
ANGLE ±1°

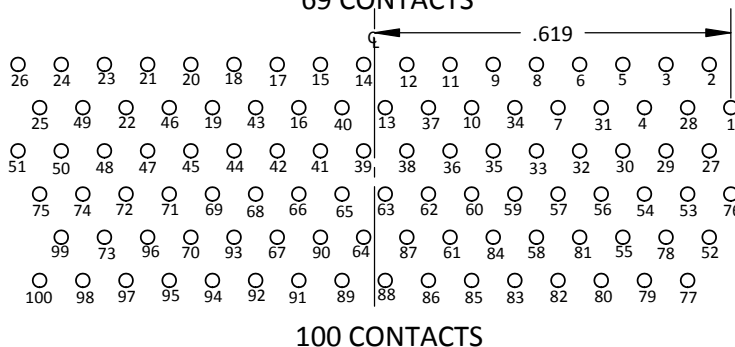
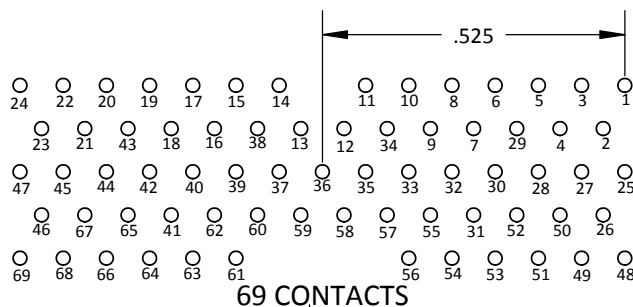
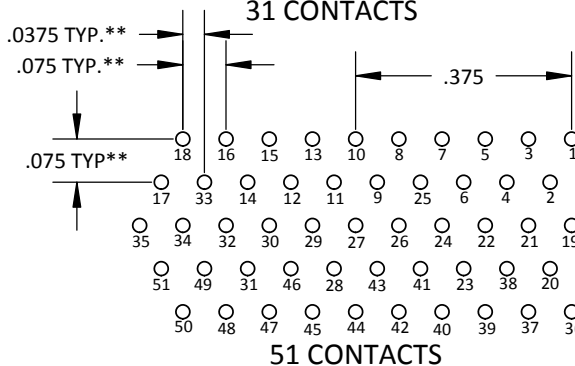
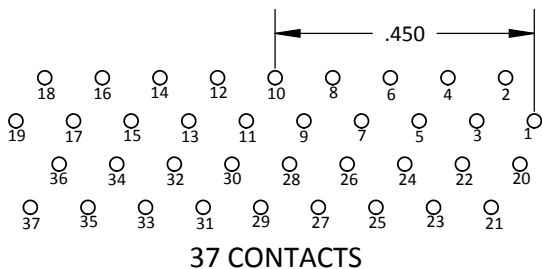
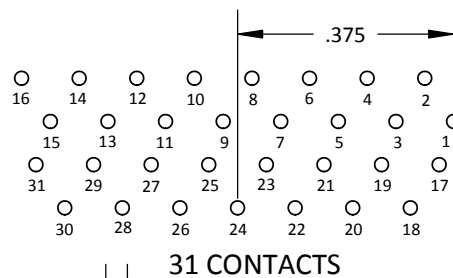
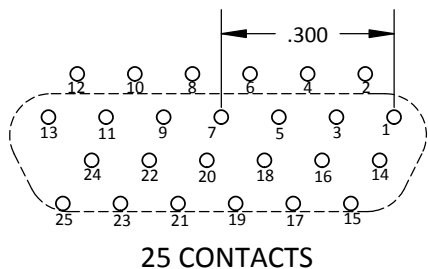
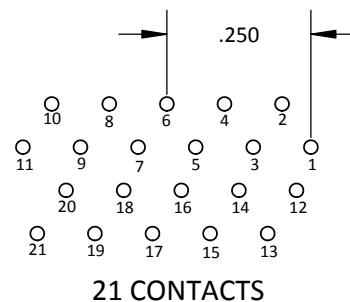
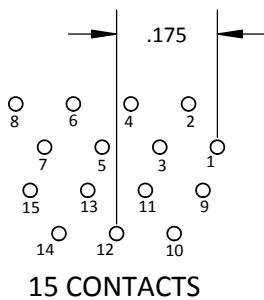
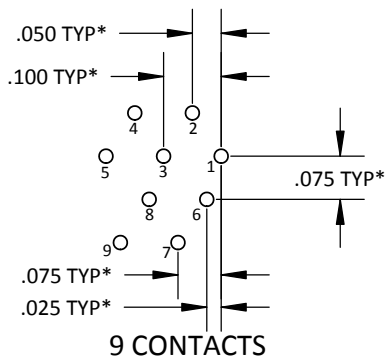
TITLE
MICRO-D METAL SHELL
STRAIGHT BOARD MOUNT,
CONDENSED, W/ O-RING/GASKET

SHT 2 OF 4

DWG. NO.

MDV

REV
F



MDV RECEPTACLE PCB LAYOUTS

* SIZES 9-37: .100 X .075 GRID PATTERN OFFSET BY .050

** SIZES 51-100: .075 X .075 GRID PATTERN OFFSET BY .0375

TOLERANCE: .XXX ±.005
.XX ±.01
ANGLE ±1°

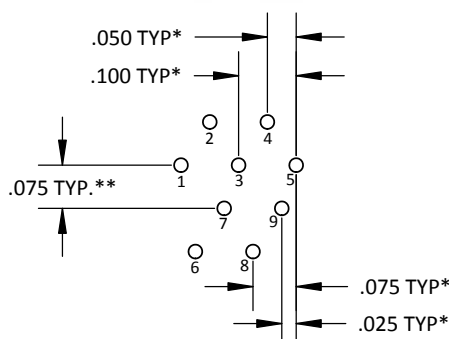
TITLE MICRO-D METAL SHELL
STRAIGHT BOARD MOUNT,
CONDENSED, W/ O-RING/GASKET

SHT 3 OF 4

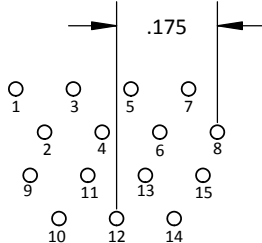
DWG. NO.

MDV

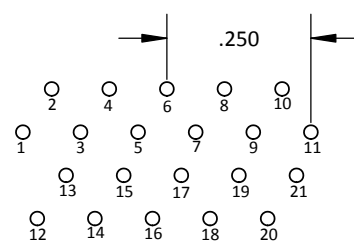
REV
F



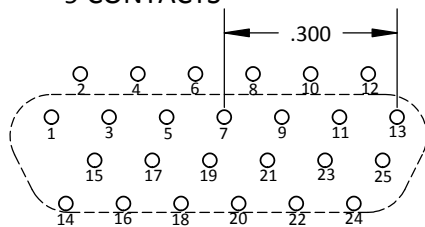
9 CONTACTS



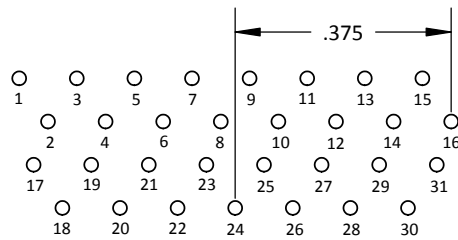
15 CONTACTS



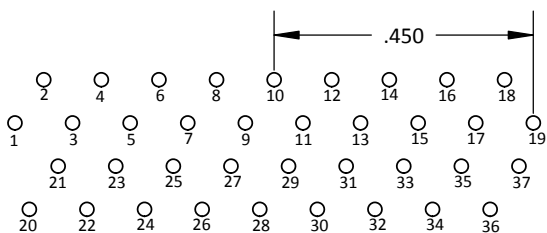
21 CONTACTS



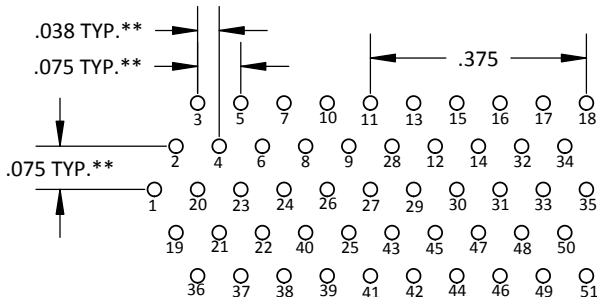
25 CONTACTS



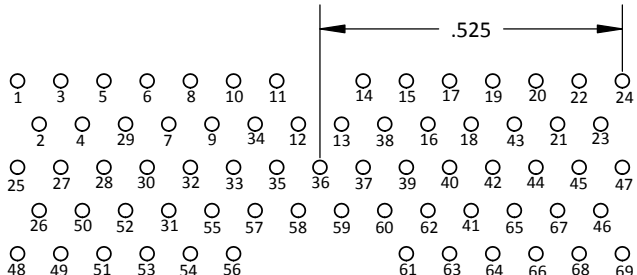
31 CONTACTS



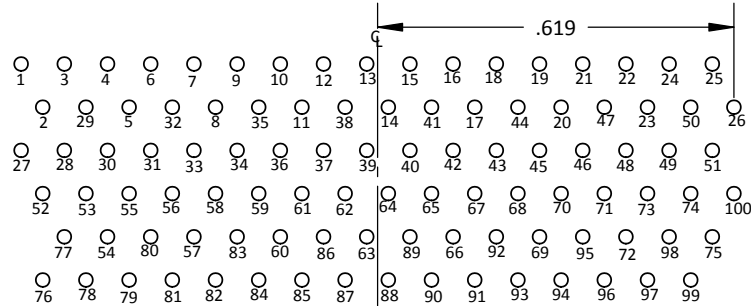
37 CONTACTS



51 CONTACTS



69 CONTACTS



100 CONTACTS

MDV PLUG PCB LAYOUTS

* SIZES 9-37: .100 X .075 GRID PATTERN OFFSET BY .050
 ** SIZES 51-100: .075 X .075 GRID PATTERN OFFSET BY .0375

TOLERANCE: .XXX ±.005
 .XX ±.01
 ANGLE ±1°

TITLE MICRO-D METAL SHELL
 STRAIGHT BOARD MOUNT,
 CONDENSED, W/ O-RING/GASKET

SHT 4 OF 4

DWG. NO.

MDV

REV
F