

FD X - X X X X X X X

CRISTEK FILTERED
D-SUBMINIATURE CONNECTOR

LAYOUT
S = STANDARD (SIZE 20 CONTACT)
H = HIGH DENSITY (SIZE 22 CONTACT)

TYPE OF FILTER
C = C
P = Pi

FILTER CHARACTERISTICS
L = LOW RANGE
M = MID RANGE
T = STANDARD RANGE
H = HIGH RANGE
V = VERY HIGH RANGE

SHELL SIZE
1 = 9 POS. STD/ 15 POS. HD
2 = 15 POS. STD/ 26 POS. HD
3 = 25 POS. STD/ 44 POS. HD
4 = 37 POS. STD/ 62 POS. HD
5 = 50 POS. STD/ 78 POS. HD
6 = 104 POS. HD

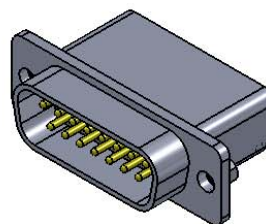
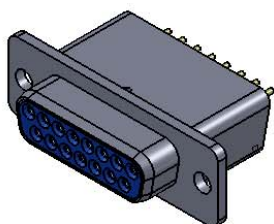
MODIFIER
0 = NO HARDWARE
4 = #4-40 CLINCH NUT

TERMINATION
P = PC TAIL, STRAIGHT
R = PC TAIL, RIGHT ANGLE
S = SOLDER CUP
W = WIRE WRAP

CONTACT TYPE
P = PIN
S = SOCKET

SHELL FINISH
A = BRIGHT CADMIUM OVER NICKEL PLATE
B = ELECTROLESS NICKEL (PREFERRED PLATING)
Y = YELLOW CADMIUM OVER NICKEL PLATE
O = OLIVE DRAB CADMIUM OVER NICKEL PALTE
T = BRIGHT TIN

* = STRANDED WIRE TERMINATION OPTIONS ALSO AVAILABLE. CONTACT CRISTEK FOR DETAILS.



MATERIALS AND FINISHES ARE IAW MIL-DTL-24308 WHERE APPLICABLE
FOR DETAILS SEE MIL SPEC OR WWW.CRISTEK.COM

1. MATERIALS:

SHELL - ALUMINUM ALLOY
INSULATOR - GLASS FILLED THERMOPLASTIC
PIN/SOCKET CONTACT - COPPER ALLOY

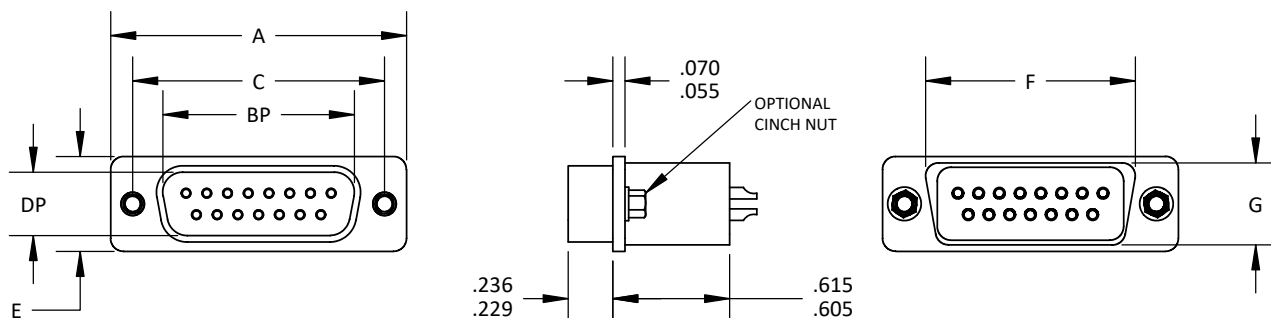
2. FINISH:

SHELL - SEE OPTIONS ABOVE
PIN/SOCKET CONTACT - GOLD OVER NICKEL

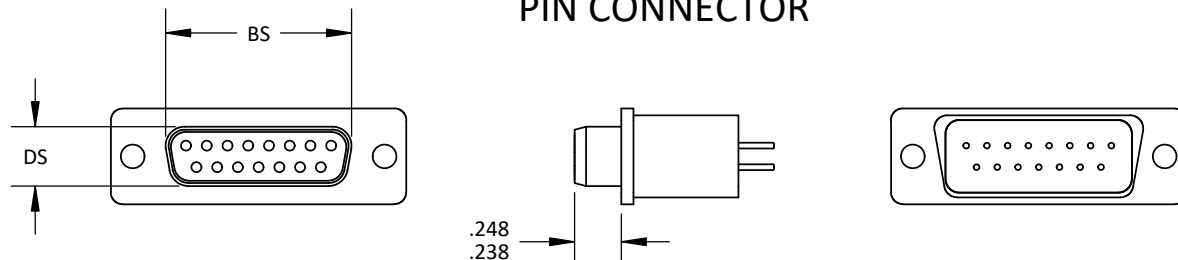
3. SPECIFICATIONS:

CURRENT RATING ----- 7.5 AMPS MAX
TEMPERATURE RATING ----- -55° C TO +125° C
INSULATION RESISTANCE ----- 1000 MEGOHMS MIN
DWV AT SEA LEVEL ----- 100 VDC
CONTACT RETENTION ----- 9 lb MINIMUM AXIAL LOAD
ENGAGEMENT FORCE ----- 18 oz MAX
SEPARATION FORCE ----- 0.7 oz MIN

TOLERANCE: .XXX ±.005 .XX ±.01 ANGLE ±1°	TITLE FILTERED D-SUBMINIATURE CONFIRMING TO M24308, STANDARD AND HIGH DENSITY	SHT 1 OF 4	DWG. NO. FDX	REV D
--	--	------------	-----------------	----------



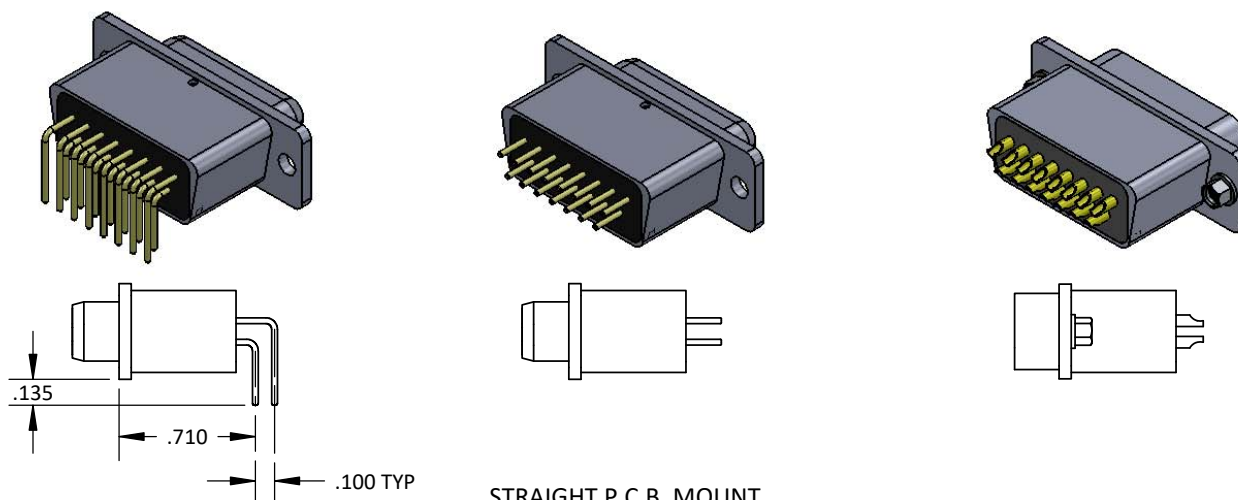
PIN CONNECTOR



SOCKET CONNECTOR

SHELL SIZE (NO. OF PINS & LAYOUT)	A ± .015	BP	BS	C	DP	DS	E ± .015	F	G
1 - (9 STD / 15 HD)	1.213	.666	.643	.984	.330	.311	.494	.766	.427
2 - (15 STD / 26 HD)	1.541	.994	.971	1.312	.330	.311	.494	1.090	.427
3 - (25 STD / 44 HD)	2.088	1.534	1.511	1.852	.330	.311	.494	1.632	.427
4 - (37 STD / 62 HD)	2.729	2.182	2.159	2.500	.330	.311	.494	2.279	.427
5 - (50 STD / 78 HD)	2.635	2.079	2.064	2.406	.442	.423	.605	2.185	.539
6 - (104 HD)	2.729	2.212	2.189	2.500	.504	.486	.678	2.307	.601

BASIC SHELL DIMENSIONS



RIGHT ANGLE P.C.B. MOUNT
SEE CATALOG M24308 FOR PCB HOLE PATTERNS

STRAIGHT P.C.B. MOUNT
SEE CATALOG M24308 FOR PCB HOLE PATTERNS
NOTE: LEADS FOR STANDARD DENSITY CONTACTS WILL BE \varnothing .030"
LEADS FOR HIGH DENSITY CONTACTS WILL BE \varnothing .020"

SOLDER CUP
SEE CATALOG M24308 FOR TYPICAL TERMINATION DETAILS

TOLERANCE: .XXX ±.005
.XX ±.01
ANGLE ±1°

TITLE **FILTERED D-SUBMINIATURE
CONFIRMING TO M24308,
STANDARD AND HIGH DENSITY**

SHT 2 OF 4

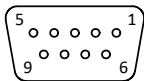
DWG. NO. **FDX**

REV **D**

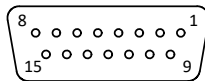


FILTERED D-SUBMINIATURE CONFIRMING TO M24308,
STANDARD AND HIGH DENSITY

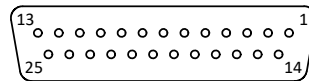
SOCKET INSERT MATING FACE (RECEPTACLE) FOR STANDARD DENSITY
CONTACT SIZE #20



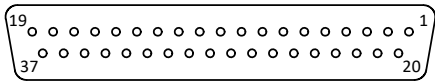
SHELL SIZE 1, 9 SOCKET



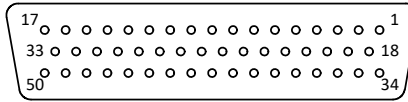
SHELL SIZE 2, 15 SOCKET



SHELL SIZE 3, 25 SOCKET

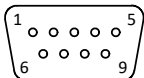


SHELL SIZE 4, 37 SOCKET

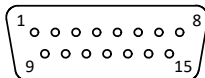


SHELL SIZE 5, 50 SOCKET

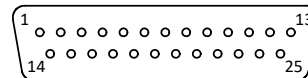
PIN INSERT MATING FACE (PLUG) FOR STANDARD DENSITY
CONTACT SIZE #20



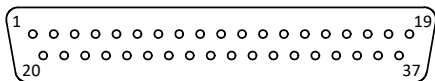
SHELL SIZE 1, 9 PIN



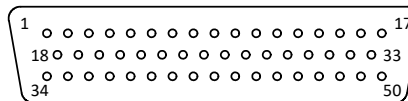
SHELL SIZE 2, 15 PIN



SHELL SIZE 3, 25 SOCKET

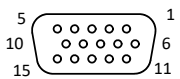


SHELL SIZE 4, 37 SOCKET

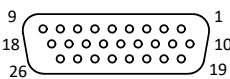


SHELL SIZE 5, 50 SOCKET

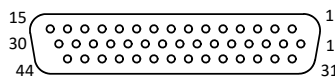
SOCKET INSERT MATING FACE (RECEPTACLE) FOR HIGH DENSITY
CONTACT SIZE #22D



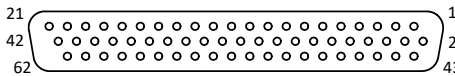
SHELL SIZE 1, 15 SOCKET



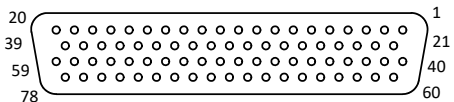
SHELL SIZE 2, 26 SOCKETS



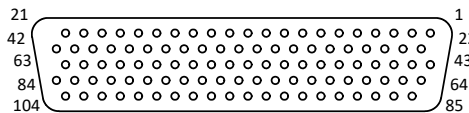
SHELL SIZE 3, 44 SOCKETS



SHELL SIZE 4, 62 SOCKETS

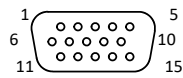


SHELL SIZE 5, 78 SOCKETS

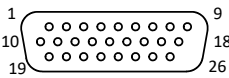


SHELL SIZE 6, 104 SOCKETS

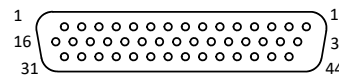
PIN INSERT MATING FACE (PLUG) FOR HIGH DENSITY
CONTACT SIZE #22D



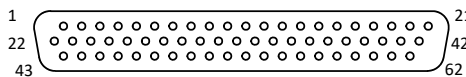
SHELL SIZE 1, 15 PINS



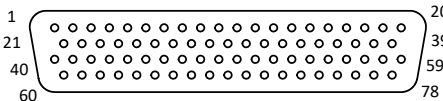
SHELL SIZE 2, 26 PINS



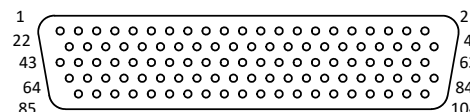
SHELL SIZE 3, 44 PINS



SHELL SIZE 4, 62 PINS



SHELL SIZE 5, 78 PINS



SHELL SIZE 6, 104 PINS

TOLERANCE: .XXX ±.005
.XX ±.01
ANGLE ±1°

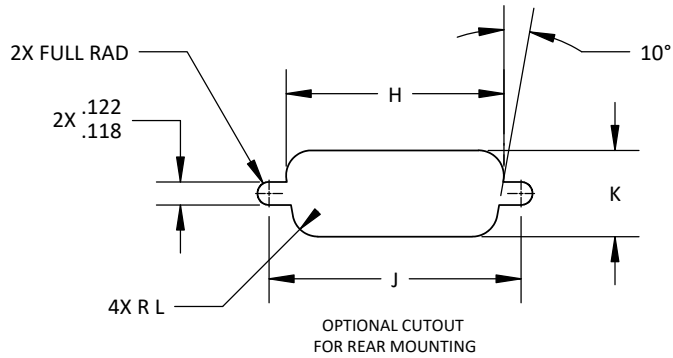
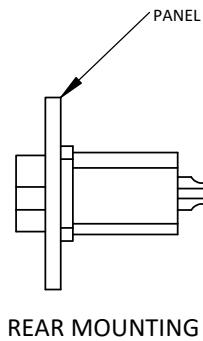
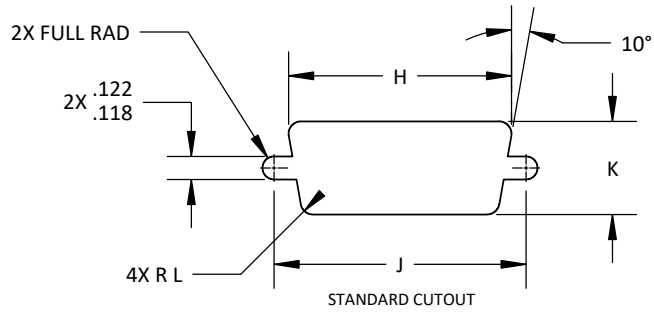
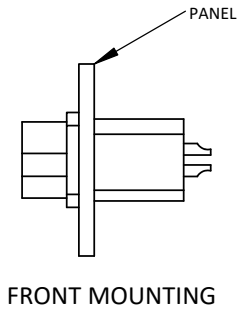
TITLE FILTERED D-SUBMINIATURE
CONFIRMING TO M24308,
STANDARD AND HIGH DENSITY

SHT 3 OF 4

DWG. NO.

FDX

REV
D



SHELL SIZE (NO. OF POS. & LAYOUT)	MOUNTING METHOD	H	J	K	L
1 - (9 STD / 15 HD)	FRONT	.833	.984	.485	.065
	REAR	.806	.984	.449	.132
2 - (15 STD / 26 HD)	FRONT	1.161	1.312	.485	.065
	REAR	1.134	1.312	.449	.132
3 - (25 STD / 44 HD)	FRONT	1.700	1.852	.485	.065
	REAR	1.674	1.852	.449	.132
4 - (37 STD / 62 HD)	FRONT	2.349	2.500	.485	.065
	REAR	2.326	2.500	.449	.132
5 - (50 STD / 78 HD)	FRONT	2.254	2.406	.593	.065
	REAR	2.218	2.406	.555	.132
6 - (104 HD)	FRONT	2.372	2.500	.655	.065
	REAR	2.250	2.500	.617	.132

MOUNTING METHODS

TOLERANCE: .XXX ±.005
.XX ±.01
ANGLE ±1°

TITLE FILTERED D-SUBMINIATURE
CONFORMING TO M24308,
STANDARD AND HIGH DENSITY

SHT 4 OF 4

DWG. NO.

FDX

REV
D