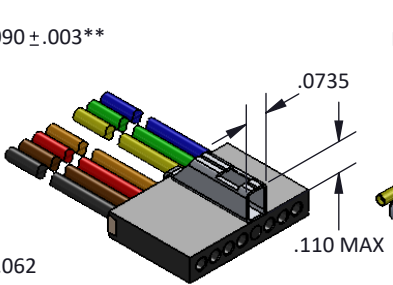
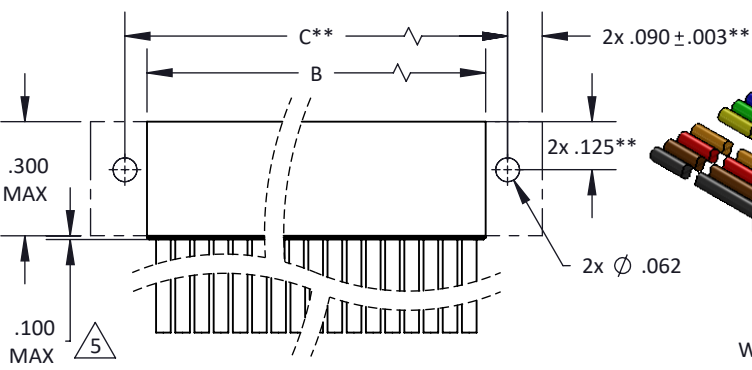
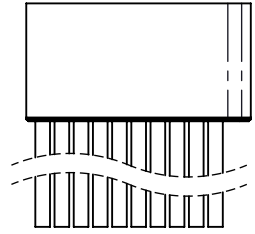
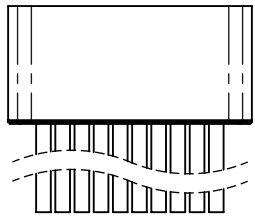
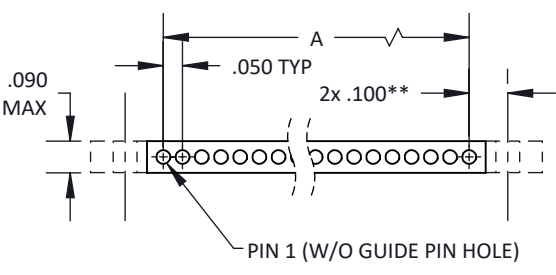
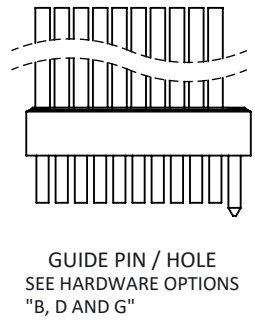
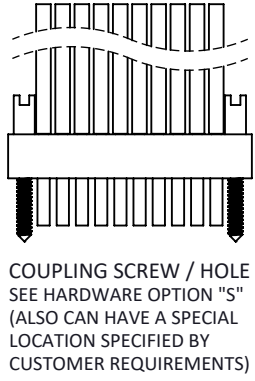
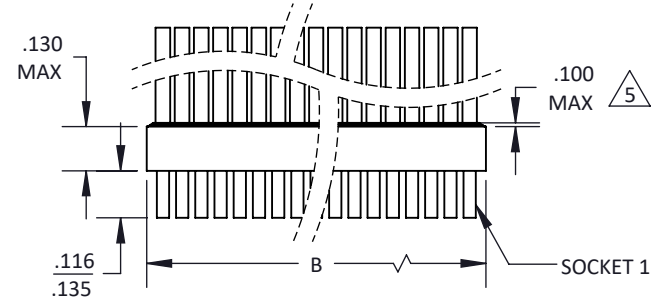
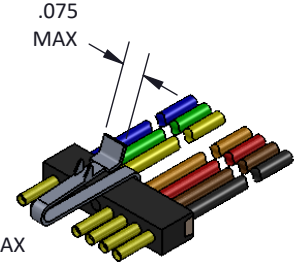


NO. OF CONTACTS	A	B MAX	C**	NO. OF CONTACTS	A	B MAX	C**	NO. OF CONTACTS	A	B MAX	C**	NO. OF CONTACTS	A	B MAX	C**
02	.05	.135	.250	15	.70	.785	.900	28	1.35	1.435	1.550	41	2.00	2.085	2.200
03	.10	.185	.300	16	.75	.835	.950	29	1.40	1.485	1.600	42	2.05	2.135	2.250
04	.15	.235	.350	17	.80	.885	1.000	30	1.45	1.535	1.650	43	2.10	2.185	2.300
05	.20	.285	.400	18	.85	.935	1.050	31	1.50	1.585	1.700	44	2.15	2.235	N/A
06	.25	.335	.450	19	.90	.985	1.100	32	1.55	1.635	1.750	45	2.20	2.285	N/A
07	.30	.385	.500	20	.95	1.035	1.150	33	1.60	1.685	1.800	46	2.25	2.335	N/A
08	.35	.435	.550	21	1.00	1.085	1.200	34	1.65	1.735	1.850	47	2.30	2.385	N/A
09	.40	.485	.600	22	1.05	1.135	1.250	35	1.70	1.785	1.900	48	2.35	2.435	N/A
10	.45	.535	.650	23	1.10	1.185	1.300	36	1.75	1.835	1.950	49	2.40	2.485	N/A
11	.50	.585	.700	24	1.15	1.235	1.350	37	1.80	1.885	2.000	50	2.45	2.535	N/A
12	.55	.635	.750	25	1.20	1.285	1.400	38	1.85	1.935	2.050				
13	.60	.685	.800	26	1.25	1.335	1.450	39	1.90	1.985	2.100				
14	.65	.735	.850	27	1.30	1.385	1.500	40	1.95	2.035	2.150				



MICRO STRIP WITH PLUG LATCH

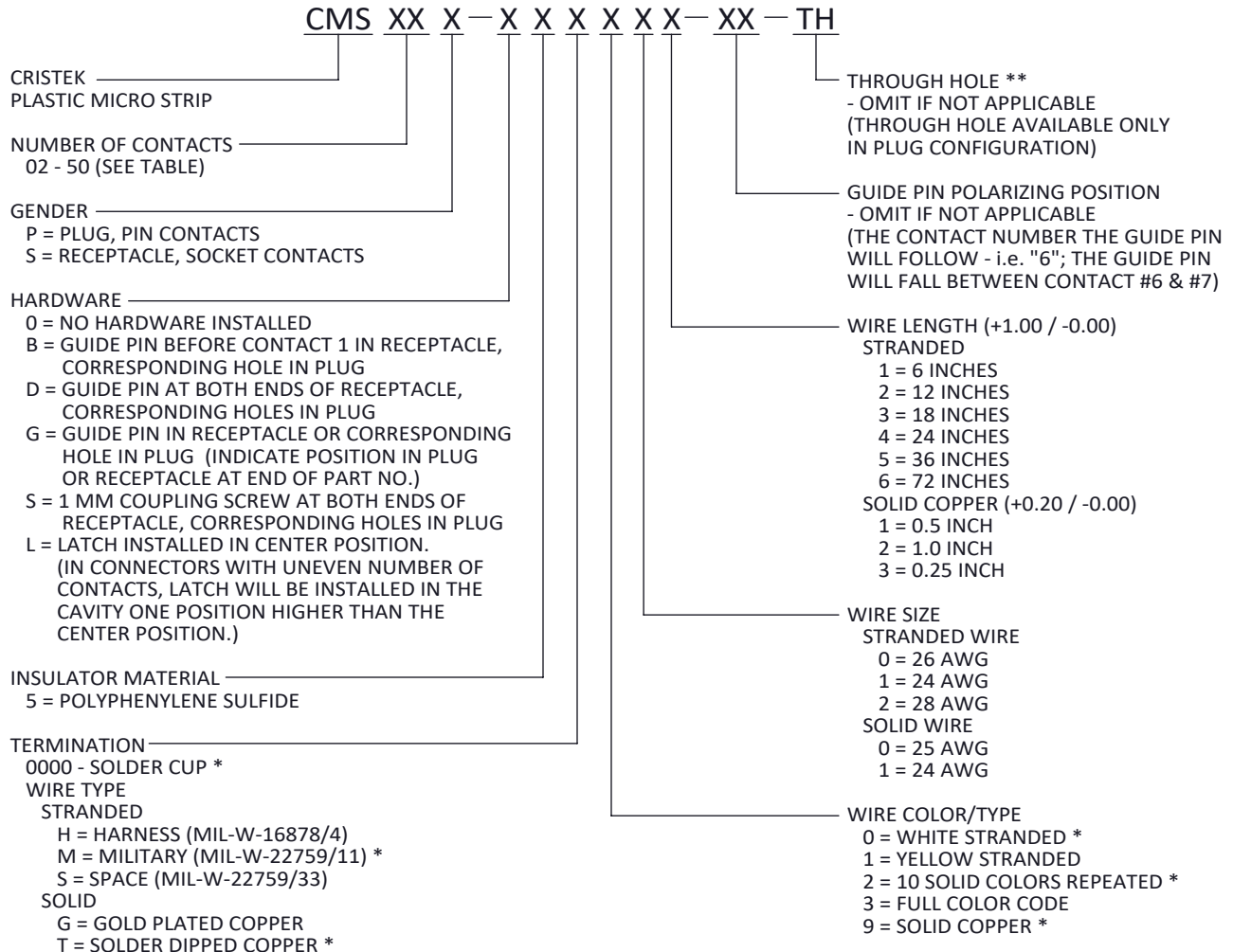


MICRO STRIP WITH RECEPTACLE LATCH

TOLERANCE: .XXX ±.005 .XX ±.01 ANGLE ±1°	TITLE MICRO STRIP	SHT 1 OF 2	DWG. NO. CMS	REV M
--	-----------------------------	------------	------------------------	-----------------

THINGS TO KNOW ABOUT MICRO STRIPS

- FOR ORDERING PURPOSES SPECIFY ONLY THE NUMBER OF CONTACTS NEEDED, DO NOT INCLUDE POSITIONS FOR HARDWARE.
- TO CALCULATE DIMENSIONS, ADD ONE CONTACT POSITION FOR EACH GUIDE PIN/SCREW/LATCH/OPENING REQUIRED.
- IF HARDWARE IS ORDERED, EXCEPT LATCHES, IT IS INSTALLED IN THE RECEPTACLE. BE SURE TO ORDER PLUGS TO ACCEPT HARDWARE.
- HARDWARE CAN BE MODIFIED, COMBINED OR POSITIONED TO CONFORM TO CUSTOMER SPECIFICATIONS. PLEASE CONTACT CRISTEK FOR FURTHER INFORMATION.
- END-ON-END STACKING APPLICATIONS ARE ALSO AVAILABLE. PLEASE CONTACT CRISTEK FOR DETAILS.
- STRIPS WITH OVER 30 CONTACTS MAY BE DIFFICULT TO MATE AND DEMATE AND TEND TO BECOME FRAGILE. CONTACT CRISTEK FOR APPLICATION ASSISTANCE



MATERIALS AND FINISHES ARE IAW MIL-DTL-83513 FOR DETAILS SEE MIL SPEC OR WWW.CRISTEK.COM

- | | | |
|--|---|---|
| <p>1. MATERIALS:
INSULATOR - GLASS FILLED THERMOPLASTIC PIN/SOCKET CONTACT - COPPER ALLOY</p> <p>2. FINISH:
CONTACT - GOLD OVER NICKEL</p> | <p>3. SPECIFICATIONS:</p> <p>CURRENT RATING ----- 3 AMPS MAX
TEMPERATURE RATING ----- -55° C TO +125° C
INSULATION RESISTANCE ----- 5000 MEGOHMS MIN
DWV AT SEA LEVEL ----- 600 VAC
DWV AT 70,000 FT ALTITUDE --- 150 VAC
CONTACT RESISTANCE ----- 24, 26 & 28 AWG (STRANDED) = 70 mV DROP MAX AT 2.5 AMPS
24 & 25 AWG (SOLID) = 65 mV DROP MAX AT 2.5 AMPS
LOW LEVEL CONTACT ----- STRANDED=32 MILLIOHMS MAX RESISTANCE
SOLID = 25 MILLIOHMS MAX
CONTACT RETENTION ----- 5 lb MINIMUM AXIAL LOAD
ENGAGEMENT FORCE ----- 6 oz MAX
SEPARATION FORCE ----- 0.5 oz MIN</p> | <p>4. ADDITIONAL INFORMATION:
DESIGN AND PERFORMANCE IN GENERAL ACCORDANCE WITH M83513.
DUAL ROW MICRO STRIP AVAILABLE, SEE CDS. CONTACT CRISTEK FOR OTHER CONFIGURATIONS.</p> <p>△ STANDARD HEIGHT OF EPOXY. SOME SIZES AND APPLICATIONS MAY REQUIRE ADDITIONAL STRAIN RELIEF. CONTACT CRISTEK FOR DETAILS.</p> |
|--|---|---|
- * = MOST COMMONLY USED & STOCKED TERMINATION OPTIONS
** = DIMENSIONS/INFORMATION FOR THROUGH HOLE MOUNTING OPTION

TOLERANCE: .XXX ±.005 .XX ±.01 ANGLE ±1°	TITLE MICRO STRIP	SHT 2 OF 2	DWG. NO. CMS	REV M
--	-----------------------------	--------------------------	------------------------	-----------------