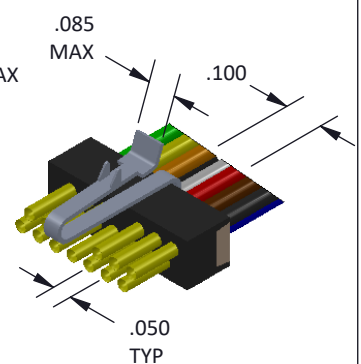
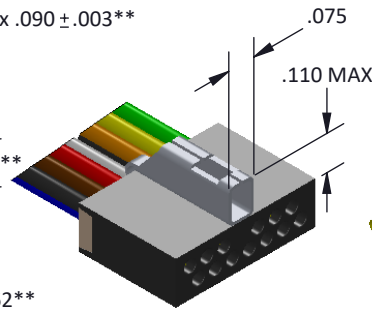
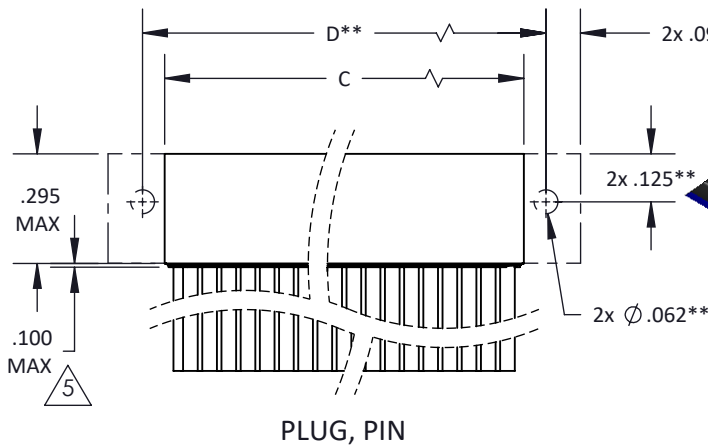
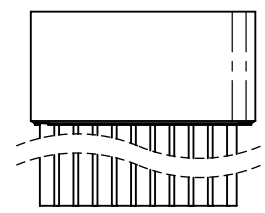
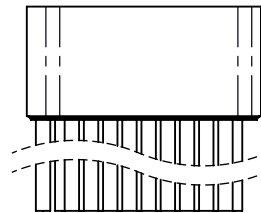
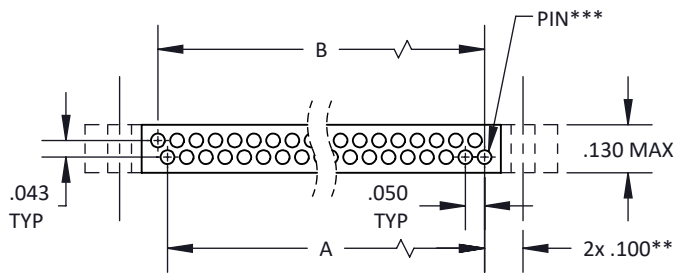
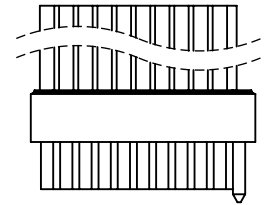
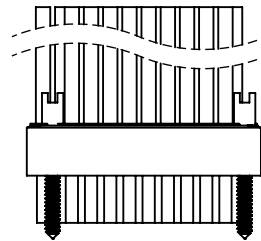
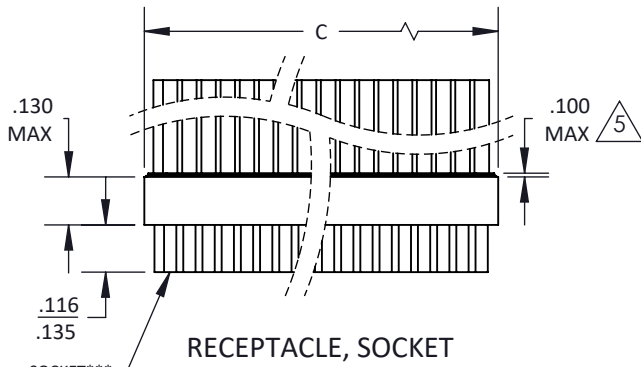


NO. OF CONTACTS	A	B	C MAX	D**
03	.050	-	.135	.250
04	-	.075	.160	.275
05	.100	-	.185	.300
06	-	.125	.210	.325
07	.150	-	.235	.350
08	-	.175	.260	.375
09	.200	-	.285	.400
10	-	.225	.310	.425
11	.250	-	.335	.450
12	-	.275	.360	.475
13	.300	-	.385	.500
14	-	.325	.410	.525
15	.350	-	.435	.550

NO. OF CONTACTS	A	B	C MAX	D**
16	-	.375	.460	.575
17	.400	-	.485	.600
18	-	.425	.510	.625
19	.450	-	.535	.650
20	-	.475	.560	.675
21	.500	-	.585	.700
22	-	.525	.610	.725
23	.550	-	.635	.750
24	-	.575	.660	.775
25	.600	-	.685	.800
26	-	.625	.710	.825
27	.650	-	.735	.850
28	-	.675	.760	.875

NO. OF CONTACTS	A	B	C MAX	D**
29	.700	-	.785	.900
30	-	.725	.810	.925
31	.750	-	.835	.950
32	-	.775	.860	.975
33	.800	-	.885	1.000
34	-	.825	.910	1.025
35	.850	-	.935	1.050
36	-	.875	.960	1.075
37	.900	-	.985	1.100
38	-	.925	1.010	1.125
39	.950	-	1.035	1.150
40	-	.975	1.060	1.175



TOLERANCE: .XXX ± .005  
.XX ± .01  
ANGLE ± 1°

TITLE  
**MICRO STRIP  
DUAL ROW**

SHT 1 OF 2

DWG. NO.  
**CDS**

REV  
**K**

**THINGS TO KNOW ABOUT MICRO STRIPS**

- FOR ORDERING PURPOSES SPECIFY ONLY THE NUMBER OF CONTACTS NEEDED, DO NOT INCLUDE POSITIONS FOR HARDWARE.
- TO CALCULATE DIMENSIONS, ADD ONE CONTACT POSITION FOR EACH GUIDE PIN/SCREW/LATCH/OPENING REQUIRED.
- IF HARDWARE IS ORDERED, EXCEPT LATCHES, IT IS INSTALLED IN THE RECEPTACLE. BE SURE TO ORDER PLUGS TO ACCEPT HARDWARE.
- HARDWARE CAN BE MODIFIED, COMBINED OR POSITIONED TO CONFORM TO CUSTOMER SPECIFICATIONS. PLEASE CONTACT CRISTEK FOR FURTHER INFORMATION.
- END-ON-END STACKING APPLICATIONS ARE ALSO AVAILABLE. PLEASE CONTACT CRISTEK FOR DETAILS.
- STRIPS WITH OVER 40 CONTACTS MAY BE DIFFICULT TO MATE AND DEMATE AND TEND TO BECOME FRAGILE. CONTACT CRISTEK FOR APPLICATION ASSISTANCE

**CDS XX X - X X X X X - XX - TH**

CRISTEK PLASTIC  
DUAL ROW MICRO STRIP

NUMBER OF CONTACTS  
03 - 40 (SEE TABLE)

GENDER  
P = PLUG, PIN CONTACTS  
S = RECEPTACLE, SOCKET CONTACTS

HARDWARE  
0 = NO HARDWARE INSTALLED  
B = GUIDE PIN BEFORE CONTACT 1 IN RECEPTACLE, CORRESPONDING HOLE IN PLUG  
D = GUIDE PIN AT BOTH ENDS OF RECEPTACLE, CORRESPONDING HOLES IN PLUG BEFORE CONTACT 1 AND AT OPPOSITE END OF SAME ROW  
G = GUIDE PIN IN RECEPTACLE OR CORRESPONDING HOLE IN PLUG (INDICATE POSITION IN PLUG OR RECEPTACLE AT END OF PART NO.)  
S = 1 MM COUPLING SCREW AT BOTH ENDS OF RECEPTACLE, CORRESPONDING HOLES IN PLUG BEFORE CONTACT 1 AND AT OPPOSITE END OF SAME ROW  
L = LATCH INSTALLED - SEE SHEET 2 OF MSTRIP-HDW DRAWING FOR REQUIREMENTS ON LATCH POSITIONING.

INSULATOR MATERIAL  
5 = POLYPHENYLENE SULFIDE

TERMINATION  
0000 - SOLDER CUP \*  
WIRE TYPE  
STRANDED  
H = HARNESS (MIL-W-16878/4)  
M = MILITARY (MIL-W-22759/11) \*  
S = SPACE (MIL-W-22759/33)  
SOLID  
G = GOLD PLATED COPPER  
T = SOLDER DIPPED COPPER \*

THROUGH HOLE \*\*  
- OMIT IF NOT APPLICABLE  
(THROUGH HOLE AVAILABLE ONLY IN PLUG CONFIGURATION)

GUIDE PIN POLARIZING POSITION  
- OMIT IF NOT APPLICABLE  
(THE CONTACT NUMBER THE GUIDE PIN WILL FOLLOW - i.e. "6"; THE GUIDE PIN WILL FALL BETWEEN CONTACT #6 & #7)

WIRE LENGTH (+1.00 / -0.00)  
STRANDED  
1 = 6 INCHES  
2 = 12 INCHES  
3 = 18 INCHES  
4 = 24 INCHES  
5 = 36 INCHES  
6 = 72 INCHES  
SOLID COPPER (+0.20 / -0.00)  
1 = 0.5 INCH  
2 = 1.0 INCH  
3 = 0.25 INCH

WIRE SIZE  
STRANDED  
0 = 26 AWG  
1 = 24 AWG  
2 = 28 AWG  
SOLID WIRE  
0 = 25 AWG  
1 = 24 AWG

WIRE COLOR/TYPE  
0 = WHITE STRANDED \*  
1 = YELLOW STRANDED  
2 = 10 SOLID COLORS REPEATED \*  
3 = FULL COLOR CODE STRANDED  
9 = SOLID COPPER \*

\* = MOST COMMONLY USED & STOCKED TERMINATION OPTIONS  
\*\* = DIMENSIONS / INFORMATION FOR THROUGH HOLE MOUNTING OPTION  
\*\*\* = SEE SHEET 2 OF MSTRIP-HDW FOR LOCATION OF CONTACT 1.

MATERIALS AND FINISHES ARE IAW MIL-DTL-83513 FOR DETAILS SEE MIL SPEC OR WWW.CRISTEK.COM

**1. MATERIALS:**

INSULATOR - GLASS FILLED THERMOPLASTIC  
PIN/SOCKET CONTACT - COPPER ALLOY

**2. FINISH:**

CONTACT - GOLD OVER NICKEL

**3. SPECIFICATIONS:**

CURRENT RATING ----- 3 AMPS MAX  
TEMPERATURE RATING ----- -55° C TO +125° C  
INSULATION RESISTANCE ----- 5000 MEGOHMS MIN  
DWV AT SEA LEVEL ----- 600 VAC  
DWV AT 70,000 FT ALTITUDE --- 150 VAC  
CONTACT RESISTANCE ----- 8 MILLIOHMS MAX AT 2.5 AMPS  
LOW LEVEL CONTACT ----- 10 MILLIOHMS MAX  
RESISTANCE  
CONTACT RETENTION ----- 5 lb MINIMUM AXIAL LOAD  
ENGAGEMENT FORCE ----- 6 oz MAX  
SEPARATION FORCE ----- 0.5 oz MIN

**4. ADDITIONAL INFORMATION:**

DESIGN AND PERFORMANCE IN GENERAL ACCORDANCE WITH M83513. SURFACE MOUNT VERSION ALSO AVAILABLE. CONTACT CRISTEK FOR OTHER CONFIGURATIONS.

△ STANDARD HEIGHT OF EPOXY. SOME SIZES AND APPLICATIONS MAY REQUIRE ADDITIONAL STRAIN RELIEF. CONTACT CRISTEK FOR DETAILS.

TOLERANCE: .XXX ±.005  
.XX ±.01  
ANGLE ±1°

TITLE

**MICRO STRIP  
DUAL ROW**

SHT 2 OF 2

DWG. NO.

CDS

REV

**K**