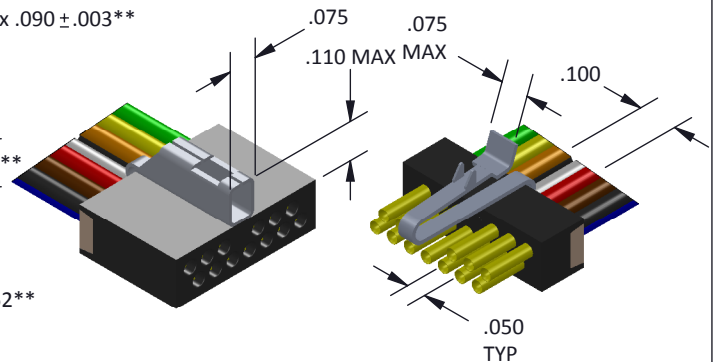
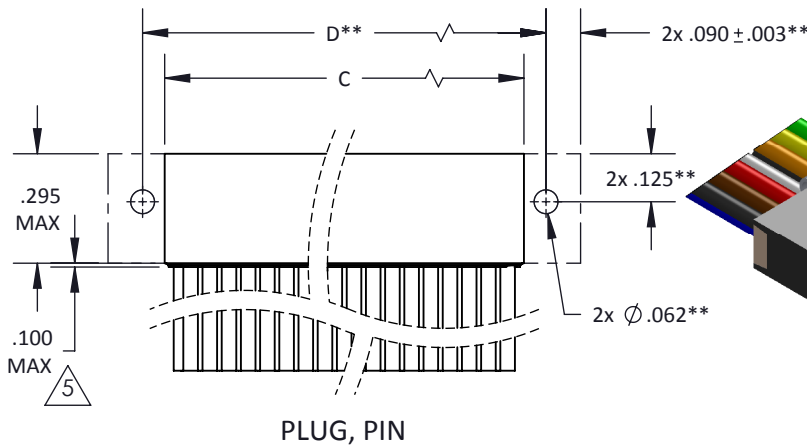
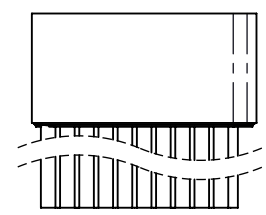
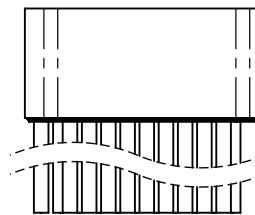
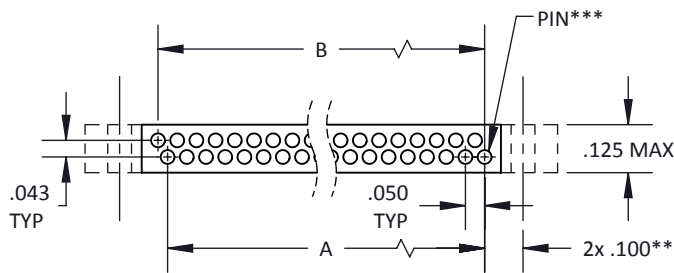
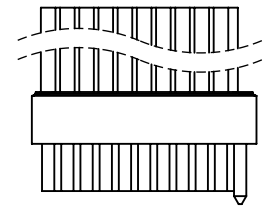
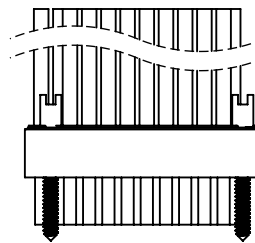
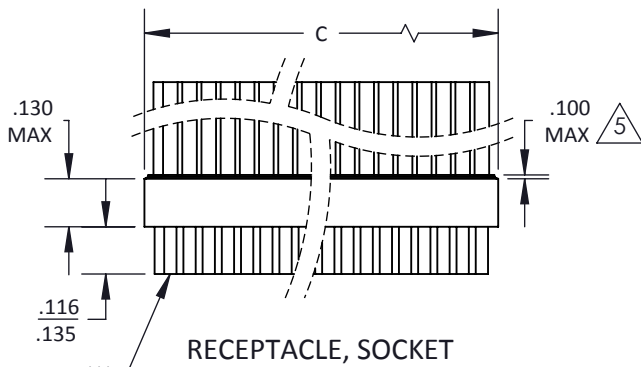


NO. OF CONTACTS	A	B	C MAX	D**
03	.050	-	.135	.250
04	-	.075	.160	.275
05	.100	-	.185	.300
06	-	.125	.210	.325
07	.150	-	.235	.350
08	-	.175	.260	.375
09	.200	-	.285	.400
10	-	.225	.310	.425
11	.250	-	.335	.450
12	-	.275	.360	.475
13	.300	-	.385	.500
14	-	.325	.410	.525
15	.350	-	.435	.550

NO. OF CONTACTS	A	B	C MAX	D**
16	-	.375	.460	.575
17	.400	-	.485	.600
18	-	.425	.510	.625
19	.450	-	.535	.650
20	-	.475	.560	.675
21	.500	-	.585	.700
22	-	.525	.610	.725
23	.550	-	.635	.750
24	-	.575	.660	.775
25	.600	-	.685	.800
26	-	.625	.710	.825
27	.650	-	.735	.850
28	-	.675	.760	.875

NO. OF CONTACTS	A	B	C MAX	D**
29	.700	-	.785	.900
30	-	.725	.810	.925
31	.750	-	.835	.950
32	-	.775	.860	.975
33	.800	-	.885	1.000
34	-	.825	.910	1.025
35	.850	-	.935	1.050
36	-	.875	.960	1.075
37	.900	-	.985	1.100
38	-	.925	1.010	1.125
39	.950	-	1.035	1.150
40	-	.975	1.060	1.175



TOLERANCE: .XXX ± .005
.XX ± .01
ANGLE ± 1°

TITLE
MICRO STRIP
DUAL ROW

SHT 1 OF 2

DWG. NO.
CDS

REV
J

THINGS TO KNOW ABOUT MICRO STRIPS

- FOR ORDERING PURPOSES SPECIFY ONLY THE NUMBER OF CONTACTS NEEDED, DO NOT INCLUDE POSITIONS FOR HARDWARE.
- TO CALCULATE DIMENSIONS, ADD ONE CONTACT POSITION FOR EACH GUIDE PIN/SCREW/LATCH/OPENING REQUIRED.
- IF HARDWARE IS ORDERED, EXCEPT LATCHES, IT IS INSTALLED IN THE RECEPTACLE. BE SURE TO ORDER PLUGS TO ACCEPT HARDWARE.
- HARDWARE CAN BE MODIFIED, COMBINED OR POSITIONED TO CONFORM TO CUSTOMER SPECIFICATIONS. PLEASE CONTACT CRISTEK FOR FURTHER INFORMATION.
- END-ON-END STACKING APPLICATIONS ARE ALSO AVAILABLE. PLEASE CONTACT CRISTEK FOR DETAILS.
- STRIPS WITH OVER 40 CONTACTS MAY BE DIFFICULT TO MATE AND DEMATE AND TEND TO BECOME FRAGILE. CONTACT CRISTEK FOR APPLICATION ASSISTANCE

CDS XX X - X X X X X X X - XX - TH

CRISTEK PLASTIC
DUAL ROW MICRO STRIP

NUMBER OF CONTACTS
03 - 40 (SEE TABLE)

GENDER
P = PLUG, PIN CONTACTS
S = RECEPTACLE, SOCKET CONTACTS

HARDWARE
0 = NO HARDWARE INSTALLED
B = GUIDE PIN BEFORE CONTACT 1 IN RECEPTACLE,
CORRESPONDING HOLE IN PLUG
D = GUIDE PIN AT BOTH ENDS OF RECEPTACLE,
CORRESPONDING HOLES IN PLUG BEFORE
CONTACT 1 AND AT OPPOSITE END OF SAME ROW
G = GUIDE PIN IN RECEPTACLE OR CORRESPONDING
HOLE IN PLUG (INDICATE POSITION IN PLUG
OR RECEPTACLE AT END OF PART NO.)
S = 1 MM COUPLING SCREW AT BOTH ENDS OF
RECEPTACLE, CORRESPONDING HOLES IN PLUG
BEFORE CONTACT 1 AND AT OPPOSITE END
OF SAME ROW
L = LATCH INSTALLED - SEE SHEET 2 OF
MSTRIP-HDW DRAWING FOR REQUIREMENTS ON
LATCH POSITIONING.

INSULATOR MATERIAL
5 = POLYPHENYLENE SULFIDE

TERMINATION
0000 - SOLDER CUP *
WIRE TYPE
STRANDED
H = HARNESS (MIL-W-16878/4)
M = MILITARY (MIL-W-22759/11) *
S = SPACE (MIL-W-22759/33)
SOLID
G = GOLD PLATED COPPER
T = SOLDER DIPPED COPPER *

THROUGH HOLE **
- OMIT IF NOT APPLICABLE
(THROUGH HOLE AVAILABLE ONLY
IN PLUG CONFIGURATION)

GUIDE PIN POLARIZING POSITION
- OMIT IF NOT APPLICABLE
(THE CONTACT NUMBER THE GUIDE PIN
WILL FOLLOW - i.e. "6"; THE GUIDE PIN
WILL FALL BETWEEN CONTACT #6 & #7)

WIRE LENGTH (+1.00 / -0.00)
STRANDED
1 = 6 INCHES
2 = 12 INCHES
3 = 18 INCHES
4 = 24 INCHES
5 = 36 INCHES
6 = 72 INCHES
SOLID COPPER (+0.20 / -0.00)
1 = 0.5 INCH
2 = 1.0 INCH
3 = 0.25 INCH

WIRE SIZE
STRANDED
0 = 26 AWG
1 = 24 AWG
2 = 28 AWG
SOLID WIRE
0 = 25 AWG
1 = 24 AWG

WIRE COLOR/TYPE
0 = WHITE STRANDED *
1 = YELLOW STRANDED
2 = 10 SOLID COLORS REPEATED *
3 = FULL COLOR CODE STRANDED
9 = SOLID COPPER *

* = MOST COMMONLY USED & STOCKED TERMINATION OPTIONS
** = DIMENSIONS / INFORMATION FOR THROUGH HOLE MOUNTING OPTION
*** = SEE SHEET 2 OF MSTRIP-HDW FOR LOCATION OF CONTACT 1.

MATERIALS AND FINISHES ARE IAW MIL-DTL-83513
FOR DETAILS SEE MIL SPEC OR WWW.CRISTEK.COM

1. MATERIALS:
INSULATOR - GLASS FILLED THERMOPLASTIC
PIN/SOCKET CONTACT - COPPER ALLOY

2. FINISH:
CONTACT - GOLD OVER NICKEL

3. SPECIFICATIONS:
CURRENT RATING ----- 3 AMPS MAX
TEMPERATURE RATING ----- -55° C TO +125° C
INSULATION RESISTANCE ----- 5000 MEGOHMS MIN
DWV AT SEA LEVEL ----- 600 VAC
DWV AT 70,000 FT ALTITUDE --- 150 VAC
CONTACT RESISTANCE ----- 8 MILLIOHMS MAX AT 2.5 AMPS
LOW LEVEL CONTACT ----- 10 MILLIOHMS MAX
RESISTANCE
CONTACT RETENTION ----- 5 lb MINIMUM AXIAL LOAD
ENGAGEMENT FORCE ----- 6 oz MAX
SEPARATION FORCE ----- 0.5 oz MIN

4. ADDITIONAL INFORMATION:
DESIGN AND PERFORMANCE IN GENERAL
ACCORDANCE WITH M83513.
SURFACE MOUNT VERSION
ALSO AVAILABLE. CONTACT CRISTEK FOR
OTHER CONFIGURATIONS.

△ STANDARD HEIGHT OF EPOXY. SOME
SIZES AND APPLICATIONS MAY REQUIRE
ADDITIONAL STRAIN RELIEF.
CONTACT CRISTEK FOR DETAILS.

TOLERANCE: .XXX ±.005 .XX ±.01 ANGLE ±1°	TITLE MICRO STRIP DUAL ROW	SHT 2 OF 2	DWG. NO. CDS	REV J
--	--	------------	------------------------	-----------------