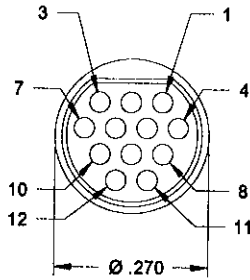
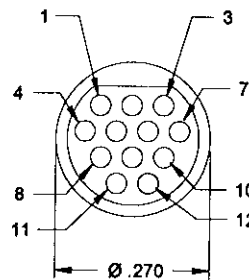


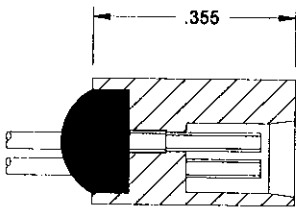
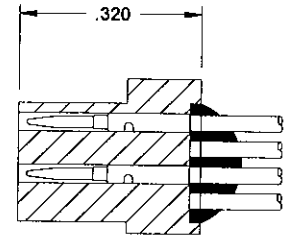
SOCKET



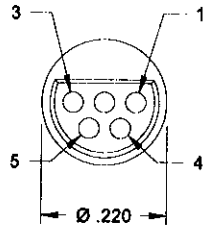
12 PIN



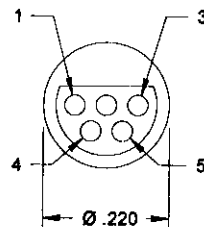
PLUG



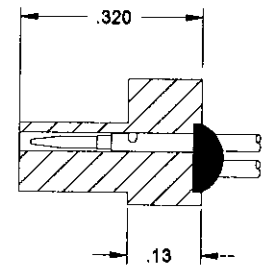
SOCKET



5 PIN



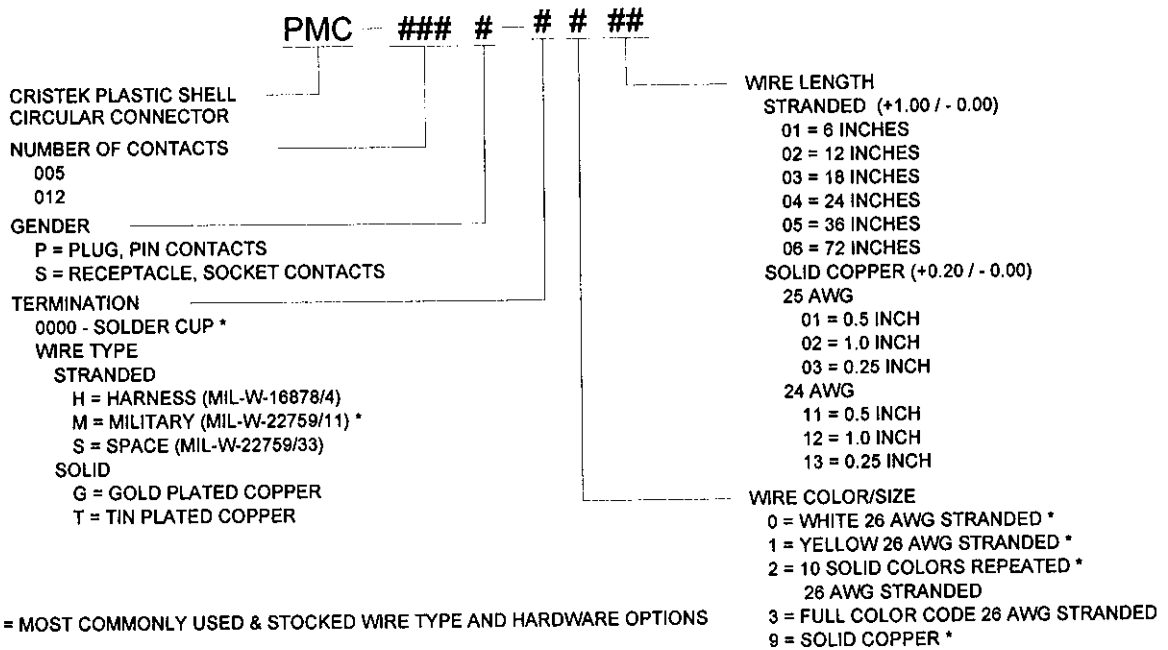
PLUG



CRISTEK INTERCONNECTS, INC.  
www.cristek.com  
1301 S. Lewis St.  
Anaheim, CA 92805  
Phone: (714) 618-2000  
FAX: (714) 535-4897

TITLE  
**CIRCULAR  
MICROMINIATURE  
PLASTIC SHELL**  
FILENAME  
**ADS-PMC-1**

DWG. NO.  
**PMC**  
CODE IDENT NO.  
**67720**  
SHT **1** OF **2** REV **B**  
TOLERANCE: .XXX ±.005 .XX ±.01 ANGLE ±1°



**1. MATERIALS:**

12 CONTACT INSULATOR - POLYPHENYLENE SULFIDE PER MIL-M-24519, TYPE GST-40F  
5 CONTACT INSULATOR - THERMOPLASTIC POLYESTER PER MIL-M-24519, TYPE GPT-30F, COLOR WHITE  
PIN CONTACT - BERYLLIUM COPPER  
SOCKET CONTACT - COPPER ALLOY

**2. FINISH:**

CONTACT - GOLD PER MIL-G-45204, TYPE II, GRADE C, CLASS I OVER NICKEL PER QQ-N-290.

**3. SPECIFICATIONS:**

CURRENT RATING ----- 3 AMPS MAX  
TEMPERATURE RATING ----- -55° C TO +125° C  
INSULATION RESISTANCE ----- 5000 MEGOHMS MIN  
DWV AT SEA LEVEL ----- 600 VAC  
DWV AT 70,000 FT ALTITUDE --- 150 VAC  
CONTACT RESISTANCE ----- 8 MILLIOHMS MAX AT 2.5 AMPS  
LOW LEVEL CONTACT ----- 10 MILLIOHMS MAX  
RESISTANCE  
CONTACT RETENTION ----- 5 lb MINIMUM AXIAL LOAD  
ENGAGEMENT FORCE ----- 6 oz MAX  
SEPARATION FORCE ----- 0.5 oz MIN

**4. ADDITIONAL INFORMATION:**

FOR OTHER SIZES AND TERMINATIONS, CONTACT CRISTEK.

<p><b>CRISTEK INTERCONNECTS, INC.</b> www.cristek.com 1301 S. Lewis St. Anaheim, CA 92805 Phone: (714) 618-2000 FAX: (714) 535-4897</p>	<p>TITLE</p> <p><b>CIRCULAR MICROMINIATURE PLASTIC SHELL</b></p>	<p>DWG. NO.</p> <p><b>PMC</b></p>	
	<p>FILENAME</p> <p><b>ADS-PMC-2</b></p>	<p>CODE IDENT NO.</p> <p><b>67720</b></p>	<p>SHT <b>2</b> OF <b>2</b></p>
<p>TOLERANCE: .XXX ±.005 .XX ±.01 ANGLE ±1°</p>			