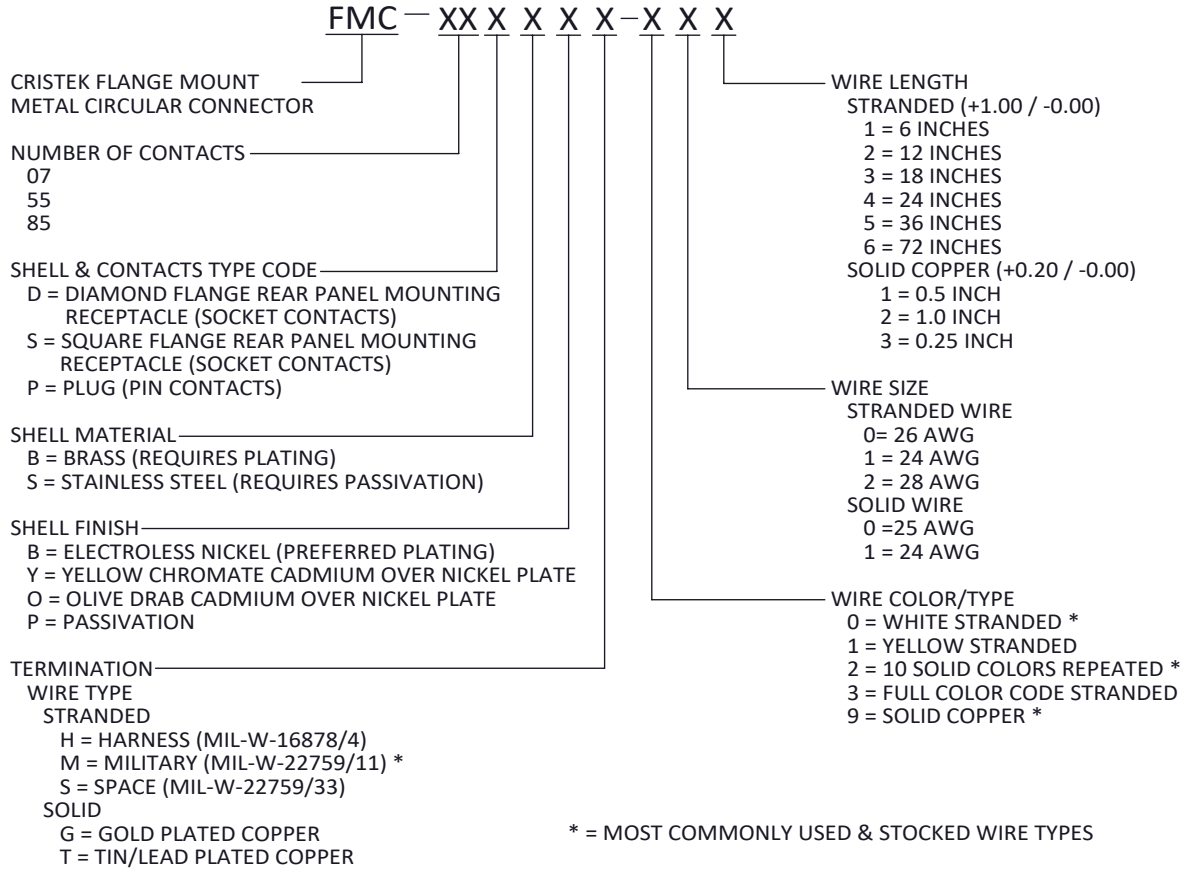


**FLANGE MOUNT CIRCULAR
MICROMINIATURE METAL SHELL**



MATERIALS AND FINISHES ARE IAW MIL-DTL-83513 WHERE APPLICABLE
FOR DETAILS SEE MIL SPEC OR WWW.CRISTEK.COM

1. MATERIALS:

SHELL AND COUPLING NUT - BRASS OR STAINLESS STEEL
INSERT - REINFORCED THERMOPLASTIC OR EPOXY RESIN
DIELECTRIC PLASTICS
PIN/SOCKET CONTACT - COPPER ALLOY

2. FINISH:

SHELL AND COUPLING NUT - ELECTROLESS NICKEL,
YELLOW CADMIUM OVER ELECTROLESS NICKEL,
OLIVE CADMIUM OVER NICKEL OR PASSIVATION
CONTACT - GOLD OVER NICKEL

3. SPECIFICATIONS:

CURRENT RATING ----- 3 AMPS MAX
TEMPERATURE RATING ----- -55° C TO +125° C
INSULATION RESISTANCE ----- 5000 MEGOHMS MIN
DWV AT SEA LEVEL ----- 600 VAC
DWV AT 70,000 FT ALTITUDE -- 150 VAC
CONTACT RESISTANCE
24, 26 & 28 AWG (STRANDED)---70 mV DROP MAX AT 2.5 AMPS
24 & 25 AWG (SOLID) ----- 65 mV DROP MAX AT 2.5 AMPS
LOW LEVEL CONTACT ----- 10 MILLIOHMS MAX
RESISTANCE
CONTACT RETENTION ----- 5 LBS MINIMUM AXIAL LOAD
ENGAGEMENT FORCE ----- 6 oz MAX
SEPARATION FORCE ----- 0.5 oz MIN

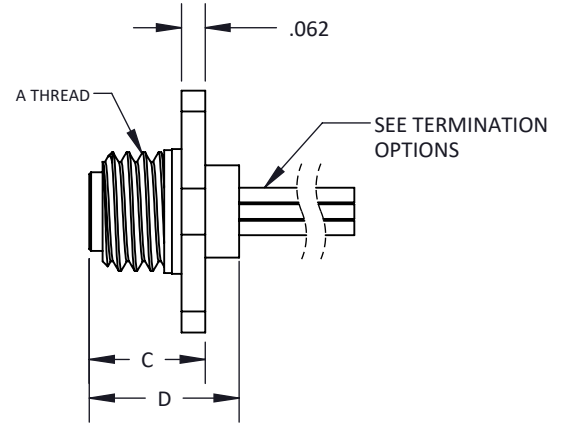
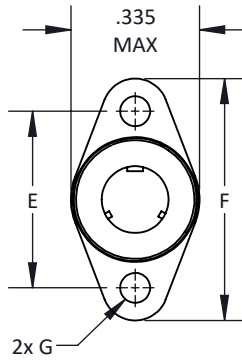
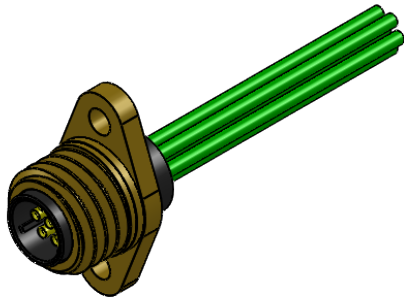
4. ADDITIONAL INFORMATION:

DESIGN AND PERFORMANCE IN GENERAL
ACCORDANCE WITH M83513 WHERE
APPLICABLE.

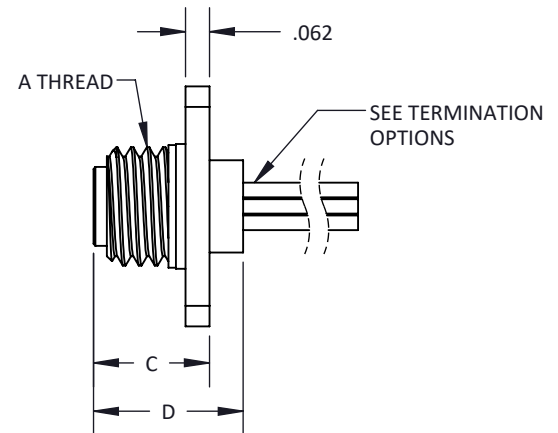
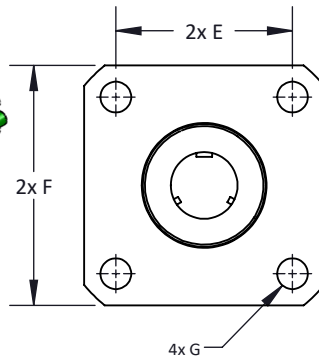
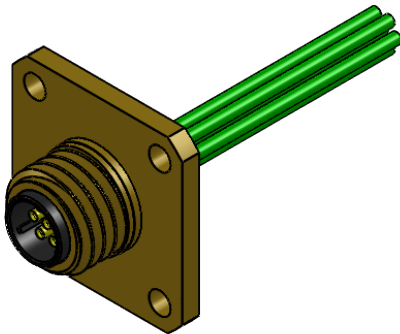
FOR OTHER TERMINATIONS,
CONTACT CRISTEK.

TOLERANCE: .XXX ±.005 .XX ±.01 ANGLE ±1°	TITLE FLANGE MOUNT CIRCULAR MICROMINIATURE METAL SHELL	SHT 1 OF 3	DWG. NO. FMC	REV E
--	--	------------	------------------------	-----------------

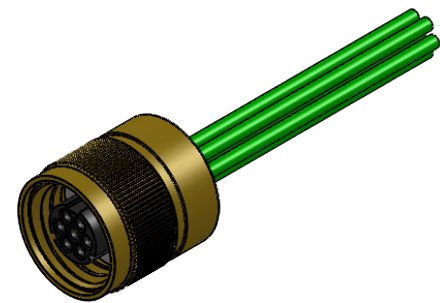
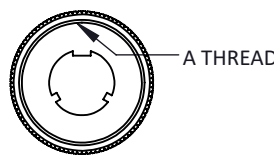
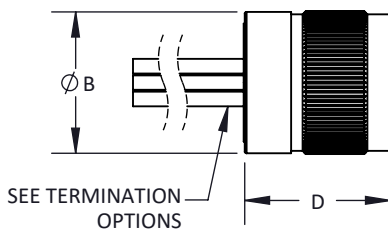
**FLANGE MOUNT CIRCULAR
MICROMINIATURE METAL SHELL**



DIAMOND FLANGE REAR PANEL MOUNTING RECEPTACLE (TYPE D)



SQUARE FLANGE REAR PANEL MOUNTING RECEPTACLE (TYPE S)



PLUG (TYPE P)

SHELL SIZE	A THREAD	Ø B	C MAX	D MAX	E	F MAX	Ø G ±.003
7	.3125-24UNF-2A	.375	.320	.400	.460	.630	.078
55	.625-24UNEF-2A	.675	.440	.490	.760	.955	.091
85	.6875-24UNEF-2A	.745	.440	.490	.845	1.040	.091

TOLERANCE: .XXX ±.005
.XX ±.01
ANGLE ±1°

TITLE **FLANGE MOUNT CIRCULAR
MICROMINIATURE
METAL SHELL**

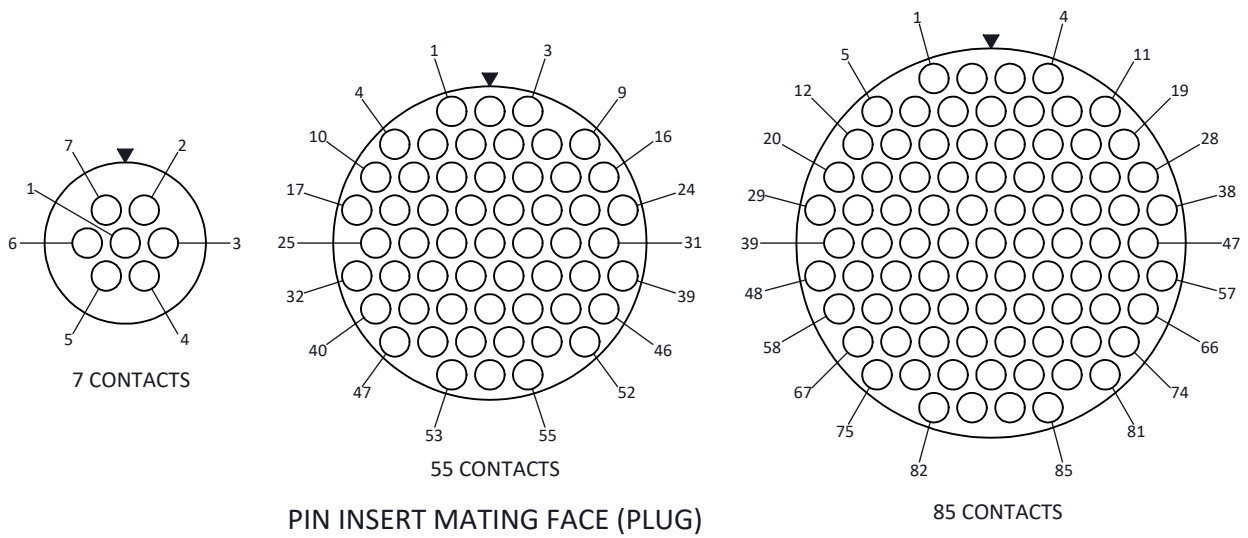
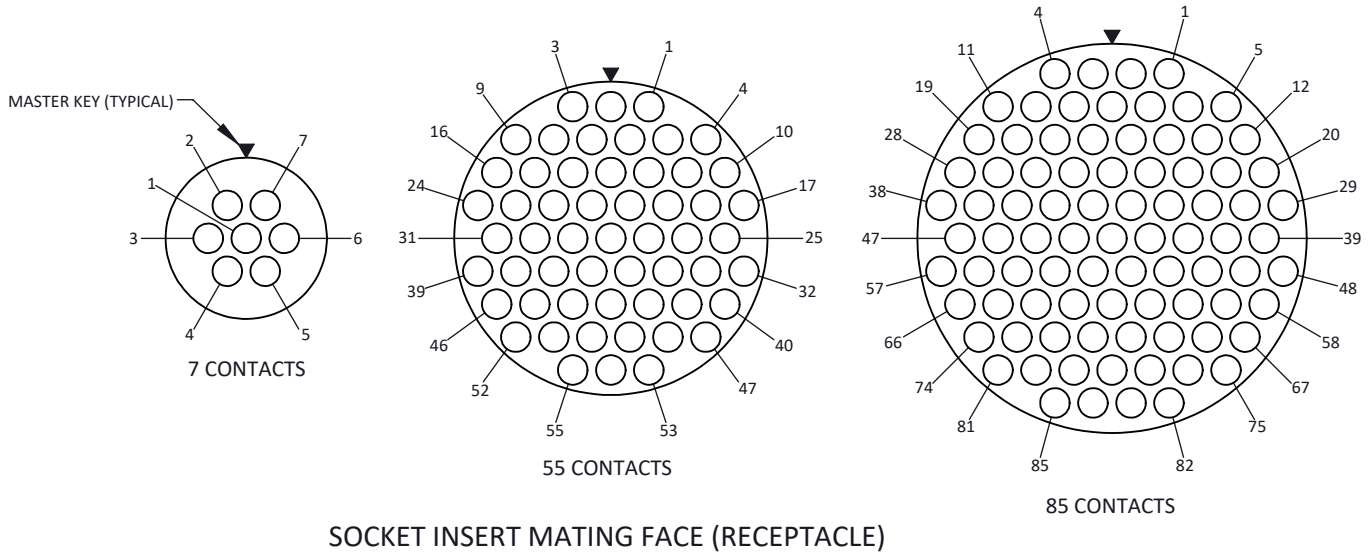
SHT 2 OF 3

DWG. NO.

FMC

REV

E



TOLERANCE: .XXX ±.005
.XX ±.01
ANGLE ±1°

TITLE
**FLANGE MOUNT CIRCULAR
MICROMINIATURE
METAL SHELL**

SHT 3 OF 3

DWG. NO.
FMC

REV
E