

**FLANGE MOUNT CIRCULAR  
MICROMINIATURE METAL SHELL**

FMC - XX X X X X - X X X

CRISTEK FLANGE MOUNT  
METAL CIRCULAR CONNECTOR

NUMBER OF CONTACTS  
07  
55  
85

SHELL & CONTACTS TYPE CODE  
D = DIAMOND FLANGE REAR PANEL MOUNTING  
RECEPTACLE (SOCKET CONTACTS)  
S = SQUARE FLANGE REAR PANEL MOUNTING  
RECEPTACLE (SOCKET CONTACTS)  
P = PLUG (PIN CONTACTS)

SHELL MATERIAL  
B = BRASS (REQUIRES PLATING)  
S = STAINLESS STEEL (REQUIRES PASSIVATION)

SHELL FINISH  
B = ELECTROLESS NICKEL (PREFERRED PLATING)  
Y = YELLOW CHROMATE CADMIUM OVER NICKEL PLATE  
O = OLIVE DRAB CADMIUM OVER NICKEL PLATE  
P = PASSIVATION

TERMINATION  
WIRE TYPE  
STRANDED  
H = HARNESS (MIL-W-16878/4)  
M = MILITARY (MIL-W-22759/11) \*  
S = SPACE (MIL-W-22759/33)  
SOLID  
G = GOLD PLATED COPPER  
T = TIN/LEAD PLATED COPPER

WIRE LENGTH  
STRANDED (+1.00 / -0.00)  
1 = 6 INCHES  
2 = 12 INCHES  
3 = 18 INCHES  
4 = 24 INCHES  
5 = 36 INCHES  
6 = 72 INCHES  
SOLID COPPER (+0.20 / -0.00)  
1 = 0.5 INCH  
2 = 1.0 INCH  
3 = 0.25 INCH

WIRE SIZE  
STRANDED WIRE  
0 = 26 AWG  
1 = 24 AWG  
2 = 28 AWG  
SOLID WIRE  
0 = 25 AWG  
1 = 24 AWG

WIRE COLOR/TYPE  
0 = WHITE STRANDED \*  
1 = YELLOW STRANDED  
2 = 10 SOLID COLORS REPEATED \*  
3 = FULL COLOR CODE STRANDED  
9 = SOLID COPPER \*

\* = MOST COMMONLY USED & STOCKED WIRE TYPES

MATERIALS AND FINISHES ARE IAW MIL-DTL-83513 WHERE APPLICABLE  
FOR DETAILS SEE MIL SPEC OR WWW.CRISTEK.COM

1. MATERIALS:

SHELL AND COUPLING NUT - BRASS OR STAINLESS STEEL  
INSERT - REINFORCED THERMOPLASTIC OR EPOXY RESIN  
DIELECTRIC PLASTICS  
PIN/SOCKET CONTACT - COPPER ALLOY

2. FINISH:

SHELL AND COUPLING NUT - ELECTROLESS NICKEL,  
YELLOW CADMIUM OVER ELECTROLESS NICKEL,  
OLIVE CADMIUM OVER NICKEL OR PASSIVATION  
CONTACT - GOLD OVER NICKEL

3. SPECIFICATIONS:

CURRENT RATING ----- 3 AMPS MAX  
TEMPERATURE RATING ----- -55° C TO +125° C  
INSULATION RESISTANCE ----- 5000 MEGOHMS MIN  
DWV AT SEA LEVEL ----- 600 VAC  
DWV AT 70,000 FT ALTITUDE -- 150 VAC  
CONTACT RESISTANCE  
26 AWG ----- 32 MILLIOHMS  
25 AWG ----- 25 MILLIOHMS  
24 AWG ----- 25 MILLIOHMS  
LOW LEVEL CONTACT ----- 10 MILLIOHMS MAX  
RESISTANCE  
CONTACT RETENTION ----- 5 LBS MINIMUM AXIAL LOAD  
ENGAGEMENT FORCE ----- 6 oz MAX  
SEPARATION FORCE ----- 0.5 oz MIN

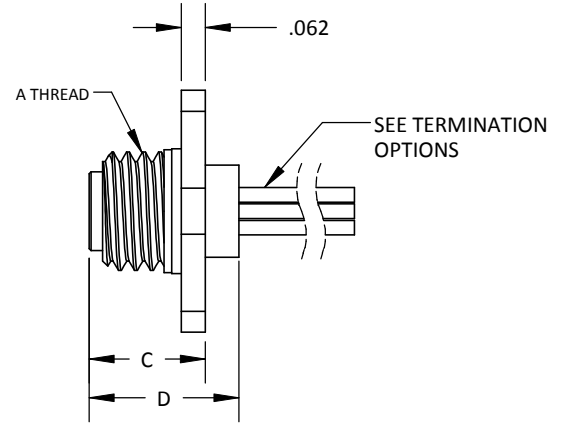
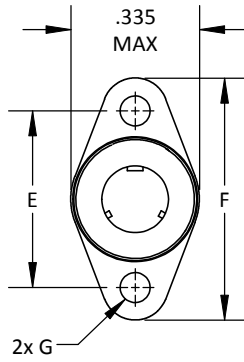
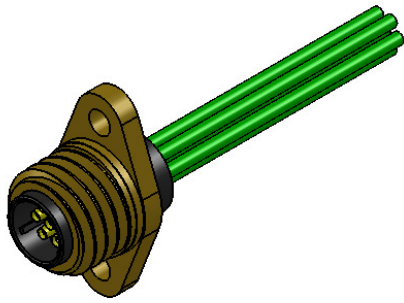
4. ADDITIONAL INFORMATION:

DESIGN AND PERFORMANCE IN GENERAL  
ACCORDANCE WITH M83513 WHERE  
APPLICABLE.

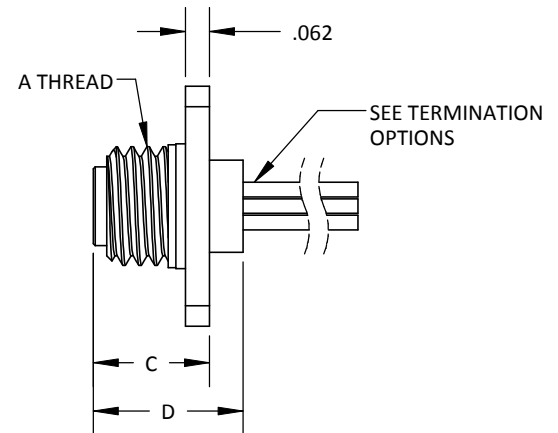
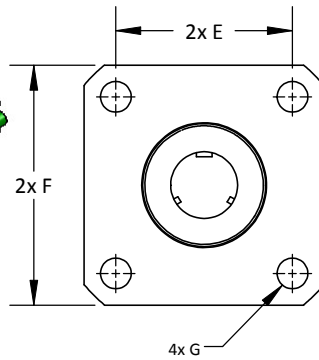
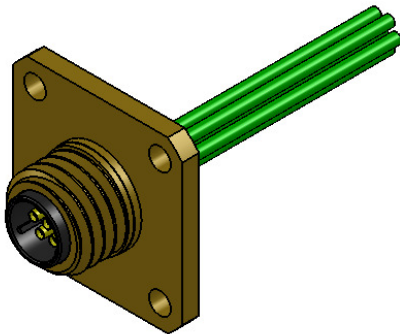
FOR OTHER TERMINATIONS,  
CONTACT CRISTEK.

TOLERANCE: .XXX ±.005 .XX ±.01 ANGLE ±1°	TITLE <b>FLANGE MOUNT CIRCULAR MICROMINIATURE METAL SHELL</b>	SHT 1 OF 3	DWG. NO. <b>FMC</b>	REV <b>D</b>
------------------------------------------------	--------------------------------------------------------------------------	------------	------------------------	-----------------

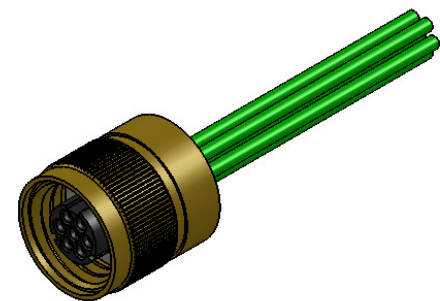
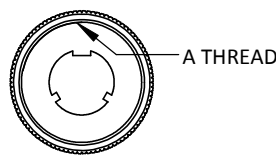
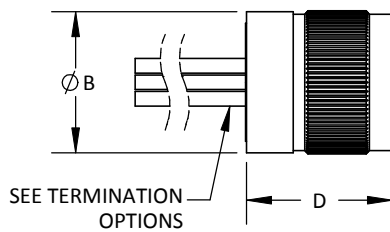
**FLANGE MOUNT CIRCULAR  
MICROMINIATURE METAL SHELL**



**DIAMOND FLANGE REAR PANEL MOUNTING RECEPTACLE (TYPE D)**



**SQUARE FLANGE REAR PANEL MOUNTING RECEPTACLE (TYPE S)**



**PLUG (TYPE P)**

SHELL SIZE	A THREAD	$\phi$ B	C MAX	D MAX	E	F MAX	$\phi$ G $\pm$ .003
7	.3125-24UNF-2A	.375	.320	.400	.460	.630	.078
55	.625-24UNEF-2A	.675	.440	.490	.760	.955	.091
85	.6875-24UNEF-2A	.745	.440	.490	.845	1.040	.091

TOLERANCE: .XXX  $\pm$ .005  
.XX  $\pm$ .01  
ANGLE  $\pm$ 1°

TITLE **FLANGE MOUNT CIRCULAR  
MICROMINIATURE  
METAL SHELL**

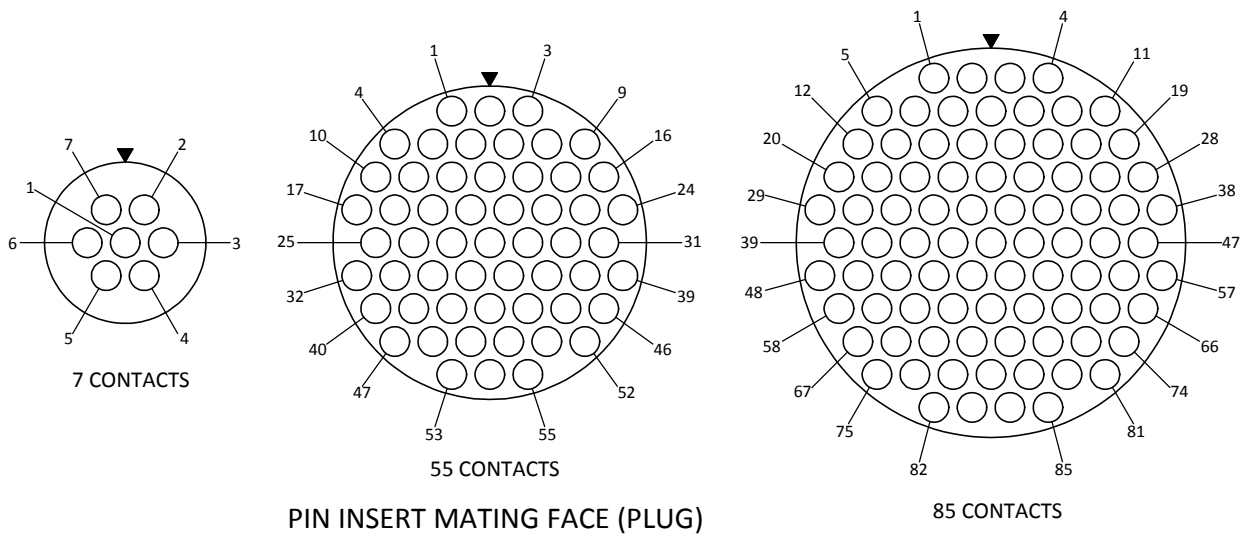
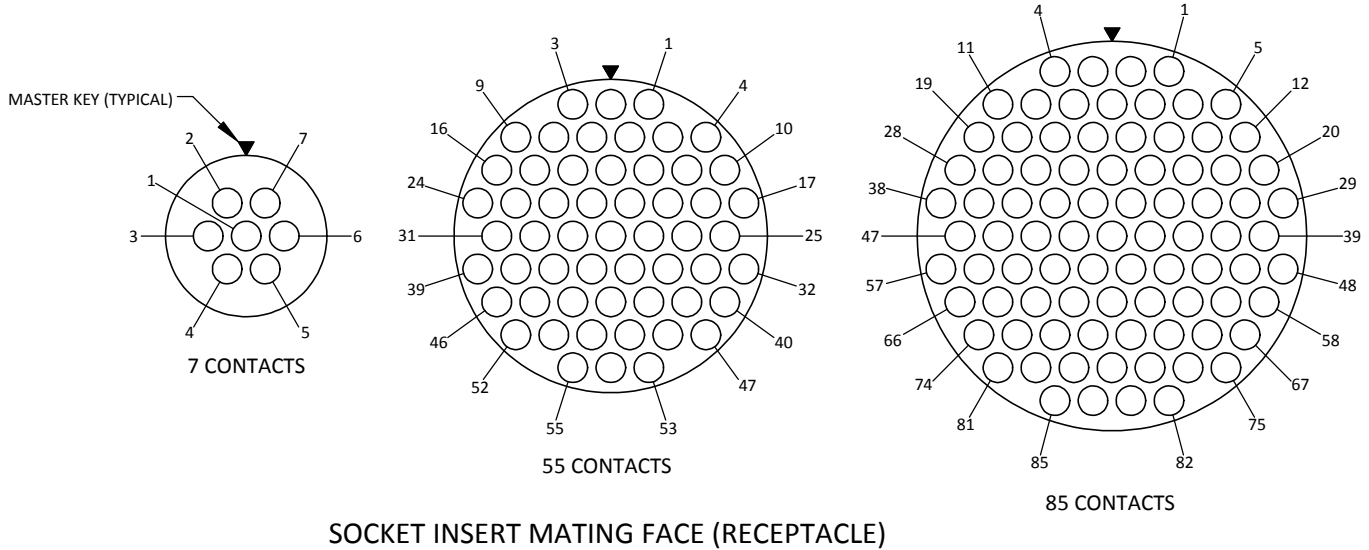
SHT 2 OF 3

DWG. NO.

FMC

REV

**D**



TOLERANCE: .XXX ±.005  
.XX ±.01  
ANGLE ±1°

TITLE **FLANGE MOUNT CIRCULAR  
MICROMINIATURE  
METAL SHELL**

SHT 3 OF 3

DWG. NO.

FMC

REV

**D**